

Anti-CCNH antibody (1-323) (STJ22956)

GENERAL INFORMATION

Product Type	Primary antibodies
Applications	WB/IP/ELISA
Host / Source	Rabbit
Reactivity	Human

PRODUCT PROPERTIES

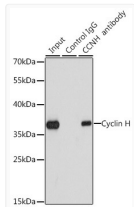
Clonality	Polyclonal
Concentration	Lot specific
Conjugation	Unconjugated
Purification	Affinity purification
Dilution Range	WB:1:500-1:2000 IP:0.5 Mu g-4 Mu g antibody for 200 Mu g extracts of whole cells ELISA:Recommended starting concentration is 1 Mu g/mL. Please optimize the concentration based on your specific assay requirements.
Formulation	PBS with 0.02% Sodium Azide, 50% Glycerol, pH 7.3.
Isotype	IgG
Molecular Weight	Protein Mw: 38kDa Observed Mw: 36kDa/
Storage Instruction	Store at -20°C for up to 1 year from the date of receipt, and avoid repeat freeze-thaw cycles.

TARGET INFORMATION

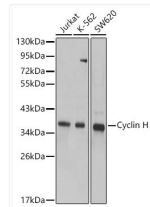
Gene ID	902
Gene Symbol	CCNH
UniProt ID	CCNH_HUMAN
Immunogen Region	1-323
Immunogen Sequence	MYHNSSQKRHWTFSSSEQLA RLRADANRKFRCCKAVANGKV LPNDPVFLEPHEEMTLCKYY EKRLLEFCVFKPAMPKRSV GTACMYFKRFYLNNSVMEYH PRIIMLTCAFLACKVDEFNV SSPQFVGNLRESPLGQEKAL EQILEYELLIQQLNFHLIV HNPYRPFEGFLDLKTRYPI LENPEILRKTADDFLNRIAL TDAYLLYTPSQIALTAILSS ASRAGITMESYLSSESLMLK
Specificity	Recombinant fusion protein containing a sequence corresponding to amino acids 1-323 of human Cyclin H (NP_001230.1).

ADDITIONAL INFORMATION

Note **STRICTLY FOR FURTHER SCIENTIFIC RESEARCH USE ONLY (RUO). MUST NOT TO BE USED IN DIAGNOSTIC OR THERAPEUTIC APPLICATIONS.**



Immunoprecipitation analysis of 200 Mu g extracts of K562 cells using 1 Mu g Cyclin H antibody (STJ22956). Western blot was performed from the immunoprecipitate using Cyclin H antibody (STJ22956) at a dilution of 1:1000.



Western blot analysis of various lysates using Cyclin H Rabbit polyclonal antibody (STJ22956) at 1:1000 dilution. Secondary antibody: HRP Goat Anti-Rabbit IgG (H+L) (STJS000856) at 1:10000 dilution. Lysates/ proteins: 25 Mu g per lane. Blocking buffer: 3 % nonfat dry milk in TBST. Detection: ECL Basic Kit. Exposure time: 90s.