

Anti-CCNB1 antibody (334-433) (STJ22943)

GENERAL INFORMATION

Product Type	Primary antibodies
Applications	WB/IF/ICC/ELISA
Host / Source	Rabbit
Reactivity	Human/Mouse/Rat

PRODUCT PROPERTIES

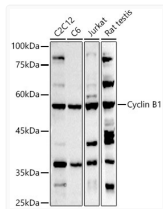
Clonality	Polyclonal
Concentration	Lot specific
Conjugation	Unconjugated
Purification	Affinity purification
Dilution Range	WB:1:100-1:500 IF/CC:1:50-1:200 ELISA:Recommended starting concentration is 1 µg/mL. Please optimize the concentration based on your specific assay requirements.
Formulation	PBS with 0.05% Proclin300, 50% Glycerol, pH 7.3.
Isotype	IgG
Molecular Weight	Protein Mw: 48kDa Observed Mw: 55kDa
Storage Instruction	Store at -20°C for up to 1 year from the date of receipt, and avoid repeat freeze-thaw cycles.

TARGET INFORMATION

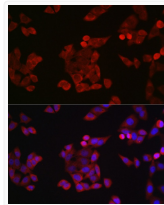
Gene ID	891
Gene Symbol	CCNB1
UniProt ID	CCNB1_HUMAN
Immunogen Region	334-433
Immunogen Sequence	YDMVHFPPSQIAAGAFCLAL KILDNGEWTPTLQHYLSYTE ESLLPVMQHLAKNVVMVNGQ LTKHMTVKNKYATSKHAKIS TLPQLNSALVQDLAKAVAKV
Specificity	A synthetic peptide corresponding to a sequence within amino acids 334-433 of human Cyclin B1 (NP_114172.1).

ADDITIONAL INFORMATION

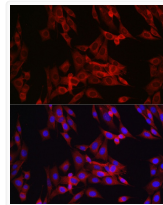
Note **STRICTLY FOR FURTHER SCIENTIFIC RESEARCH USE ONLY (RUO). MUST NOT TO BE USED IN DIAGNOSTIC OR THERAPEUTIC APPLICATIONS.**



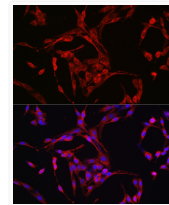
Western blot analysis of extracts of various cell lines, using Cyclin B1 antibody (STJ22943) at 1:500 dilution. Secondary antibody: HRP Goat Anti-rabbit IgG (H+L) (STJS000856) at 1:10000 dilution. Lysates/proteins: 25 µg per lane. Blocking buffer: 3% non-fat dry milk in TBST. Detection: ECL Basic Kit. Exposure time: 180s.



Immunofluorescence analysis of HeLa cells using Cyclin B1 rabbit polyclonal antibody (STJ22943) at dilution of 1:100 (40x lens). Blue: DAPI for nuclear staining.



Immunofluorescence analysis of NIH/3T3 cells using Cyclin B1 rabbit polyclonal antibody (STJ22943) at dilution of 1:100 (40x lens). Blue: DAPI for nuclear staining.



Immunofluorescence analysis of PC-12 cells using Cyclin B1 rabbit polyclonal antibody (STJ22943) at dilution of 1:100 (40x lens). Blue: DAPI for nuclear staining.