

Anti-BTK antibody (30-240) (STJ22844)

GENERAL INFORMATION

Product Type	Primary antibodies
Applications	WB/IHC-P/ELISA
Host / Source	Rabbit
Reactivity	Human/Mouse/Rat

PRODUCT PROPERTIES

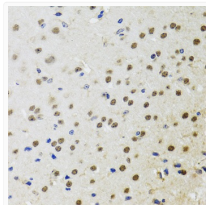
Clonality	Polyclonal
Concentration	Lot specific
Conjugation	Unconjugated
Purification	Affinity purification
Dilution Range	WB:1:500-1:2000 IHC-P:1:50-1:100 ELISA:Recommended starting concentration is 1 µg/mL. Please optimize the concentration based on your specific assay requirements.
Formulation	PBS with 0.02% Sodium Azide, 50% Glycerol, pH 7.3.
Isotype	IgG
Molecular Weight	Protein Mw: 76kDa Observed Mw: Refer to Figures
Storage Instruction	Store at -20°C for up to 1 year from the date of receipt, and avoid repeat freeze-thaw cycles.

TARGET INFORMATION

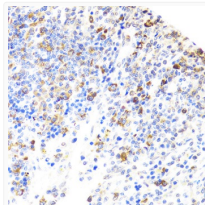
Gene ID	695
Gene Symbol	BTK
UniProt ID	BTK_HUMAN
Immunogen Region	30-240
Immunogen Sequence	FLLTVHKLSSYYEYDFERGR R GSKKGSIDVEKITCVETVVP EKNPPPERQIPRRGEESEM EQISIERFPYPFQVVYDEG PLYVFSPTTEELRKRWIHQ LK NVIRYNSDLVQKYHPCFWID GQYLCCSQATKANMGCQILE NRNGSLKPGSSHRKTKKPLP PTPEEDQILKKPLPPEPAAA PVSTSELKKVVALDYMPMN ANDLQLRKGD E
Specificity	Recombinant fusion protein containing a sequence corresponding to amino acids 30-240 of human BTK (NP_000052.1).

ADDITIONAL INFORMATION

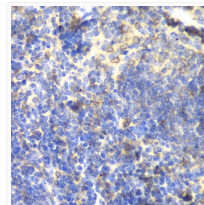
Note STRICTLY FOR FURTHER SCIENTIFIC RESEARCH USE ONLY (RUO). MUST NOT TO BE USED IN DIAGNOSTIC OR THERAPEUTIC APPLICATIONS.



Immunohistochemistry analysis of paraffin-embedded mouse brain using BTK antibody (STJ22844) at dilution of 1:100 (40x lens). Perform microwave antigen retrieval with 10 mM PBS buffer pH 7.2 before commencing with immunohistochemistry staining protocol.



Immunohistochemistry analysis of paraffin-embedded rat spleen using BTK antibody (STJ22844) at dilution of 1:100 (40x lens). Perform microwave antigen retrieval with 10 mM PBS buffer pH 7.2 before commencing with immunohistochemistry staining protocol.



Immunohistochemistry analysis of paraffin-embedded mouse spleen using BTK antibody (STJ22844) at dilution of 1:100 (40x lens). Perform microwave antigen retrieval with 10 mM PBS buffer pH 7.2 before commencing with immunohistochemistry staining protocol.