

Anti-BRAF antibody (153-313) (STJ22828)

GENERAL INFORMATION

Product Type	Primary antibodies
Applications	WB/ELISA
Host / Source	Rabbit
Reactivity	Human/Mouse/Rat

PRODUCT PROPERTIES

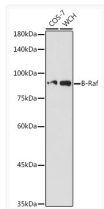
Clonality	Polyclonal
Concentration	Lot specific
Conjugation	Unconjugated
Purification	Affinity purification
Dilution Range	WB:1:100-1:500 ELISA:Recommended starting concentration is 1 μ g/mL. Please optimize the concentration based on your specific assay requirements.
Formulation	PBS with 0.05% Proclin300, 50% Glycerol, pH 7.3.
Isotype	IgG
Molecular Weight	Protein Mw: 84kDa Observed Mw: 87kDa
Storage Instruction	Store at -20°C for up to 1 year from the date of receipt, and avoid repeat freeze-thaw cycles.

TARGET INFORMATION

Gene ID	673
Gene Symbol	BRAF
UniProt ID	BRAF_HUMAN
Immunogen Region	153-313
Immunogen Sequence	QKPIVRVFLPNKQRTVVPAR CGVTVRDSLKKALMMRGLIP ECCAVYRIQDGEKKPIGWDT DISWLTGEELHVEVLENVPL TTHNFVRKTFFTLAFCDFCR KLLFQGFRCQTCGYKFHQRC STEVPLMVCVNYDQLDLLFVS KFFEHHPIPQEEASLAETAL T
Specificity	Recombinant fusion protein containing a sequence corresponding to amino acids 153-313 of human B-Raf (NP_004324.2).

ADDITIONAL INFORMATION

Note STRICTLY FOR FURTHER SCIENTIFIC RESEARCH USE ONLY (RUO). MUST NOT TO BE USED IN DIAGNOSTIC OR THERAPEUTIC APPLICATIONS.



Western blot analysis of extracts of various cell lines, using B-Raf antibody (STJ22828) at 1:500 dilution. Secondary antibody: HRP Goat Anti-Rabbit IgG (H+L) (STJS000856) at 1:10000 dilution. Lysates/proteins: 25 μ g per lane. Blocking buffer: 3% nonfat dry milk in TBST. Detection: ECL Basic Kit. Exposure time: 180s.