

Anti-BCL2L2 antibody (1-193) (STJ22781)

GENERAL INFORMATION

Product Type	Primary antibodies
Applications	WB/ELISA
Host / Source	Rabbit
Reactivity	Mouse/Rat

PRODUCT PROPERTIES

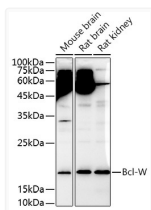
Clonality	Polyclonal
Concentration	Lot specific
Conjugation	Unconjugated
Purification	Affinity purification
Dilution Range	WB:1:500-1:1000 ELISA:Recommended starting concentration is 1 Mu g/mL. Please optimize the concentration based on your specific assay requirements.
Formulation	PBS with 0.05% Proclin300, 50% Glycerol, pH 7.3.
Isotype	IgG
Molecular Weight	Protein Mw: 21kDa Observed Mw: 18kDa
Storage Instruction	Store at -20°C for up to 1 year from the date of receipt, and avoid repeat freeze-thaw cycles.

TARGET INFORMATION

Gene ID	599
Gene Symbol	BCL2L2
UniProt ID	B2CL2_HUMAN
Immunogen Region	1-193
Immunogen Sequence	MATPASAPDTRALVADFVGY KLRQKGYVCGAGPGEGPAAD PLHQAMRAAGDEFETRFRRT FSDLAAQLHVTGSAQQRFT QVSDLELFQGGPNWGRLVAFF VFGAALCAESVNKEMEPLVG QVQEWVAVYLETQLADWIHS SGGWAEFTALYGDGALEEAR RLREGNWASVRTVLTGAVAL GALVTVGAFFASK
Specificity	A synthetic peptide corresponding to a sequence within amino acids 1-193 of human Bcl-W (NP_004041.2).

ADDITIONAL INFORMATION

Note STRICTLY FOR FURTHER SCIENTIFIC RESEARCH USE ONLY (RUO). MUST NOT TO BE USED IN DIAGNOSTIC OR THERAPEUTIC APPLICATIONS.



Western blot analysis of extracts of various cell lines, using Bcl-W antibody (STJ22781) at 1:1000 dilution. Secondary antibody: HRP Goat Anti-Rabbit IgG (H+L) (STJS000856) at 1:10000 dilution. Lysates/proteins: 25 Mu g per lane. Blocking buffer: 3% nonfat dry milk in TBST. Detection: ECL Enhanced Kit. Exposure time: 180s.