

Anti-ATXN3 antibody (1-361) (STJ22739)

GENERAL INFORMATION

Product Type	Primary antibodies
Applications	WB/IHC-P/IF/ICC/ELISA
Host / Source	Rabbit
Reactivity	Human/Mouse/Rat

PRODUCT PROPERTIES

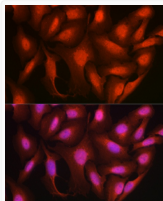
Clonality	Polyclonal
Concentration	Lot specific
Conjugation	Unconjugated
Purification	Affinity purification
Dilution Range	WB:1:500-1:1000 IHC-P:1:50-1:200 IF/CC:1:50-1:200 ELISA:Recommended starting concentration is 1 Mu g/mL. Please optimize the concentration based on your specific assay requirements.
Formulation	PBS with 0.05% Proclin300, 50% Glycerol, pH 7.3.
Isotype	IgG
Molecular Weight	Protein Mw: 41kDa Observed Mw: 42kDa
Storage Instruction	Store at -20°C for up to 1 year from the date of receipt, and avoid repeat freeze-thaw cycles.

TARGET INFORMATION

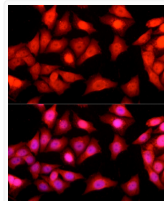
Gene ID	4287
Gene Symbol	ATXN3
UniProt ID	ATX3_HUMAN
Immunogen Region	1-361
Immunogen Sequence	MESIFHEKQEGSLCAQHCLN NLLQGEYFSPVELSSIAHQL DEEERMMAEGGVTSSEYRIT FLQQPSGNMDDSGFFSIQVI SNALKVWGLELILFNSPEYQ RLRIDPINERSFICNYKEHW FTVRKLGKQWFNLSLLTGP ELISDYLALFLAQLQQEGY SIFVVKGDLPCDEADQLLQM IRVQQMHRPKLIGEELAQLK EQRVHKTDLERVLEANDGSG MLDEDEEDLQRALALSRQE
Specificity	Recombinant fusion protein containing a sequence corresponding to amino acids 1-361 of human Ataxin-3 (ATXN3) (NP_004984.2).

ADDITIONAL INFORMATION

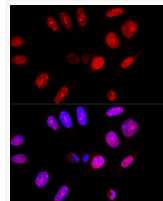
Note	STRICTLY FOR FURTHER SCIENTIFIC RESEARCH USE ONLY (RUO). MUST NOT TO BE USED IN DIAGNOSTIC OR THERAPEUTIC APPLICATIONS.
------	---



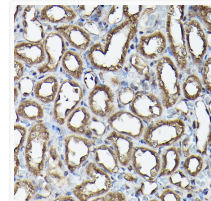
Immunofluorescence analysis of U2OS cells using Ataxin-3 (ATXN3) Rabbit polyclonal antibody (STJ22739) at dilution of 1:100 (40x lens). Blue: DAPI for nuclear staining.



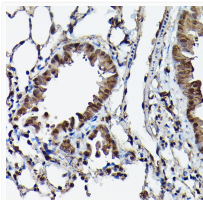
Immunofluorescence analysis of HeLa cells using Ataxin-3 (ATXN3) Rabbit polyclonal antibody (STJ22739) at dilution of 1:100 (40x lens). Blue: DAPI for nuclear staining.



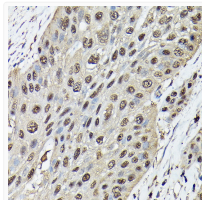
Confocal immunofluorescence analysis of U-2 OS cells using Ataxin-3 (ATXN3) Polyclonal Antibody (STJ22739) at dilution of 1:100. Blue: DAPI for nuclear staining.



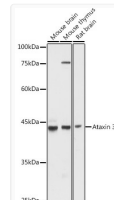
Immunohistochemistry analysis of paraffin-embedded rat kidney using Ataxin-3 (ATXN3) Rabbit polyclonal antibody (STJ22739) at dilution of 1:100 (40x lens). Perform high pressure antigen retrieval with 10 mM citrate buffer pH 6.0 before commencing with immunohistochemistry staining protocol.



Immunohistochemistry analysis of paraffin-embedded mouse lung using Ataxin-3 (ATXN3) Rabbit polyclonal antibody (STJ22739) at dilution of 1:100 (40x lens). Perform high pressure antigen retrieval with 10 mM citrate buffer pH 6.0 before commencing with immunohistochemistry staining protocol.



Immunohistochemistry analysis of paraffin-embedded human esophageal cancer using Ataxin-3 (ATXN3) Rabbit polyclonal antibody (STJ22739) at dilution of 1:100 (40x lens). Perform high pressure antigen retrieval with 10 mM citrate buffer pH 6.0 before commencing with immunohistochemistry staining protocol.



Western blot analysis of extracts of various cell lines, using Ataxin-3 (ATXN3) antibody (STJ22739) at 1:1000 dilution. Secondary antibody: HRP Goat Anti-Rabbit IgG (H+L) (STJS000856) at 1:10000 dilution. Lysates/proteins: 25 Mu g per lane. Blocking buffer: 3% nonfat dry milk in TBST. Detection: ECL Basic Kit. Exposure time: 10s.