

Anti-ATP6V1E1 antibody (77-226) (STJ22732)

GENERAL INFORMATION

Product Type	Primary antibodies
Applications	WB/IF/ICC/ELISA
Host / Source	Rabbit
Reactivity	Human/Mouse/Rat

PRODUCT PROPERTIES

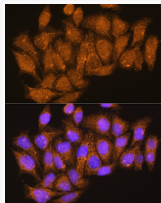
Clonality	Polyclonal
Concentration	Lot specific
Conjugation	Unconjugated
Purification	Affinity purification
Dilution Range	WB:1:500-1:1000 IF/ICC:1:50-1:200 ELISA:Recommended starting concentration is 1 Mu g/mL. Please optimize the concentration based on your specific assay requirements.
Formulation	PBS with 0.02% Sodium Azide, 50% Glycerol, pH 7.3.
Isotype	IgG
Molecular Weight	Protein Mw: 26kDa Observed Mw: 31kDa
Storage Instruction	Store at -20°C for up to 1 year from the date of receipt, and avoid repeat freeze-thaw cycles.

TARGET INFORMATION

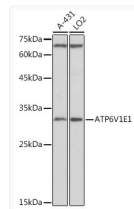
Gene ID	529
Gene Symbol	ATP6V1E1
UniProt ID	VATE1_HUMAN
Immunogen Region	77-226
Immunogen Sequence	NQARLKVLRRDDLITDLLN EAKQRLSKVVKDITTRYQVLL DGLVLQGLYQLLEPRMIVRC RKQDFPLVKAAYQKAIPMYK IATKNDVDVQIDQESYLPED IAGGVEIYNGDRKIKVSNL ESRLDLIAQQMMPEVRGALF GANANRKFLD
Specificity	Recombinant fusion protein containing a sequence corresponding to amino acids 77-226 of human ATP6V1E1 (NP_001687.1).

ADDITIONAL INFORMATION

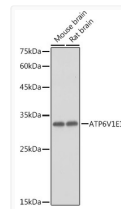
Note **STRICTLY FOR FURTHER SCIENTIFIC RESEARCH USE ONLY (RUO). MUST NOT TO BE USED IN DIAGNOSTIC OR THERAPEUTIC APPLICATIONS.**



Immunofluorescence analysis of HeLa cells using ATP6V1E1 Rabbit polyclonal antibody (STJ22732) at dilution of 1:100. Blue: DAPI for nuclear staining.



Western blot analysis of extracts of various cell lines, using ATP6V1E1 antibody (STJ22732) at 1:1000 dilution. Secondary antibody: HRP Goat Anti-Rabbit IgG (H+L) (STJS000856) at 1:10000 dilution. Lysates/proteins: 25 Mu g per lane. Blocking buffer: 3% nonfat dry milk in TBST. Detection: ECL Basic Kit. Exposure time: 30s.



Western blot analysis of extracts of various cell lines, using ATP6V1E1 antibody (STJ22732) at 1:1000 dilution. Secondary antibody: HRP Goat Anti-Rabbit IgG (H+L) (STJS000856) at 1:10000 dilution. Lysates/proteins: 25 Mu g per lane. Blocking buffer: 3% nonfat dry milk in TBST. Detection: ECL Basic Kit. Exposure time: 1s.