

Anti-ATP6AP1 antibody (90-390) (STJ22724)

GENERAL INFORMATION

Product Type	Primary antibodies
Applications	WB/ELISA
Host / Source	Rabbit
Reactivity	Human/Mouse/Rat

PRODUCT PROPERTIES

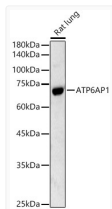
Clonality	Polyclonal
Concentration	Lot specific
Conjugation	Unconjugated
Purification	Affinity purification
Dilution Range	WB:1:100-1:500 ELISA:Recommended starting concentration is 1 Mu g/mL. Please optimize the concentration based on your specific assay requirements.
Formulation	PBS with 0.02% Sodium Azide, 50% Glycerol, pH 7.3.
Isotype	IgG
Molecular Weight	Protein Mw: 52kDa Observed Mw: 62kDa
Storage Instruction	Store at -20°C for up to 1 year from the date of receipt, and avoid repeat freeze-thaw cycles.

TARGET INFORMATION

Gene ID	537
Gene Symbol	ATP6AP1
UniProt ID	VAS1_HUMAN
Immunogen Region	90-390
Immunogen Sequence	LLFLQDKLSIEDFTAYGGVF GNKQDSAFSNLENALDLAPS SLVLPVAVDWYAVSTLTITYLQ EKLGPASPLHVDLATLRELKLNASLPALLLIRLPYTASSGL MAPREVLTGNDEVIGQVLST LKSEDPVPTAALTAVRPSRV ARDVAVVAGGLGRQLLQKQP VSPVIHPPVSYNDTAPRILF WAQNFSVAYKQWEDLTPLT FGVQELNLTGSFWNDSFARL SLTYERLFGTTVTFKFLA
Specificity	Recombinant fusion protein containing a sequence corresponding to amino acids 90-390 of human ATP6AP1 (NP_001174.2).

ADDITIONAL INFORMATION

Note **STRICTLY FOR FURTHER SCIENTIFIC RESEARCH USE ONLY (RUO). MUST NOT TO BE USED IN DIAGNOSTIC OR THERAPEUTIC APPLICATIONS.**



Western blot analysis of lysates from Rat lung, using ATP6AP1 Rabbit polyclonal antibody (STJ22724) at 1:500 dilution. Secondary antibody: HRP Goat Anti-Rabbit IgG (H+L) (STJS000856) at 1:10000 dilution. Lysates/proteins: 25 Mu g per lane. Blocking buffer: 3% nonfat dry milk in TBST. Detection: ECL Basic Kit. Exposure time: 90s.