

Anti-ARL2 antibody (1-184) (STJ22683)

GENERAL INFORMATION

Product Type	Primary antibodies
Applications	WB/ELISA
Host / Source	Rabbit
Reactivity	Mouse/Rat

PRODUCT PROPERTIES

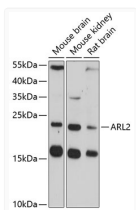
Clonality	Polyclonal
Concentration	Lot specific
Conjugation	Unconjugated
Purification	Affinity purification
Dilution Range	WB:1:500-1:2000 ELISA:Recommended starting concentration is 1 µg/mL. Please optimize the concentration based on your specific assay requirements.
Formulation	PBS with 0.01% Thimerosal, 50% Glycerol, pH 7.3.
Isotype	IgG
Molecular Weight	Protein Mw: 21kDa Observed Mw: 21kDa
Storage Instruction	Store at -20°C for up to 1 year from the date of receipt, and avoid repeat freeze-thaw cycles.

TARGET INFORMATION

Gene ID	402
Gene Symbol	ARL2
UniProt ID	ARL2_HUMAN
Immunogen Region	1-184
Immunogen Sequence	MGLLTILKKMKQKERELRLMLGLDNAGKTTILKKFNGED IDTISPTLGFNIKTLEHRGF KLNWDVGGQKSLRSYWRNY FESTDGLIWWVDSADRQRMQ DCQRELQSLVVEERLAGATL LIFANKQDLPALSSNAIRE VLELDSIRSHHWCIQCSAV TGENLLPGIDWLLDDISSRI FTAD
Specificity	Recombinant fusion protein containing a sequence corresponding to amino acids 1-184 of human ARL2 (NP_001658.2).

ADDITIONAL INFORMATION

Note STRICTLY FOR FURTHER SCIENTIFIC RESEARCH USE ONLY (RUO). MUST NOT TO BE USED IN DIAGNOSTIC OR THERAPEUTIC APPLICATIONS.



Western blot analysis of various lysates using ARL2 Rabbit polyclonal antibody (STJ22683) at 1:3000 dilution. _Secondary antibody: HRP Goat Anti-Rabbit IgG (H+L) (STJS000856) at 1:10000 dilution. _Lysates/proteins: 25 µg per lane. _Blocking buffer: 3% nonfat dry milk in TBST. _Detection: ECL Enhanced Kit. _Exposure time: 90s.