

Anti-ARHGEF7 antibody (1-260) (STJ22679)

GENERAL INFORMATION

Product Type	Primary antibodies
Applications	WB/ELISA
Host / Source	Rabbit
Reactivity	Human/Mouse

PRODUCT PROPERTIES

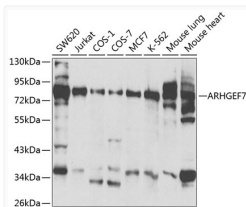
Clonality	Polyclonal
Concentration	Lot specific
Conjugation	Unconjugated
Purification	Affinity purification
Dilution Range	WB:1:500-1:2000 ELISA:Recommended starting concentration is 1 μ g/mL. Please optimize the concentration based on your specific assay requirements.
Formulation	PBS with 0.02% Sodium Azide, 50% Glycerol, pH 7.3.
Isotype	IgG
Molecular Weight	Protein Mw: 90kDa Observed Mw: 86kDa
Storage Instruction	Store at -20°C for up to 1 year from the date of receipt, and avoid repeat freeze-thaw cycles.

TARGET INFORMATION

Gene ID	8874
Gene Symbol	ARHGEF7
UniProt ID	ARHG7_HUMAN
Immunogen Region	1-260
Immunogen Sequence	MNSAEQTVTWLITLGVLESP KKTISDPEGFLQASLKDGVV LCRLLERLLPGTIEKTFDAN DLYQGQNFNKVLSLVTLNK VTADIGLGSDSVCARPSSHR IKSFDLSGSQLHTRTSKLF QGQYRSLDMDNSNNQLVVR AKFNFQQTNEDELSFSKGDV IHVTRVEEGGWEGTLNGRT GWFPSNYVREVKASEKPVSP KSGTLKSPPKGFDTTAINKS YYNVVLQNILETENEYSKE
Specificity	Recombinant fusion protein containing a sequence corresponding to amino acids 1-260 of human ARHGEF7 (NP_001106984.1).

ADDITIONAL INFORMATION

Note **STRICTLY FOR FURTHER SCIENTIFIC RESEARCH USE ONLY (RUO). MUST NOT TO BE USED IN DIAGNOSTIC OR THERAPEUTIC APPLICATIONS.**



Western blot analysis of extracts of various cell lines, using ARHGEF7 antibody (STJ22679) at 1:500 dilution. Secondary antibody: HRP Goat Anti-Rabbit IgG (H+L) (STJS000856) at 1:10000 dilution. Lysates/proteins: 25 μ g per lane. Blocking buffer: 3% nonfat dry milk in TBST.