

Anti-AQP4 antibody (256-323) (STJ22661)

GENERAL INFORMATION

Product Type	Primary antibodies
Applications	WB/IHC-P/IF/ICC/ELISA
Host / Source	Rabbit
Reactivity	Human/Mouse/Rat

PRODUCT PROPERTIES

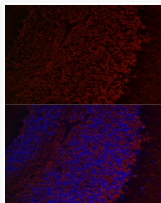
Clonality	Polyclonal
Concentration	Lot specific
Conjugation	Unconjugated
Purification	Affinity purification
Dilution Range	WB:1:100-1:500 IHC-P:1:50-1:200 IF/CC:1:50-1:200 ELISA:Recommended starting concentration is 1 µg/mL. Please optimize the concentration based on your specific assay requirements.
Formulation	PBS with 0.05% Proclin300, 50% Glycerol, pH 7.3.
Isotype	IgG
Molecular Weight	Protein Mw: 35kDa Observed Mw: 35kDa
Storage Instruction	Store at -20°C for up to 1 year from the date of receipt, and avoid repeat freeze-thaw cycles.

TARGET INFORMATION

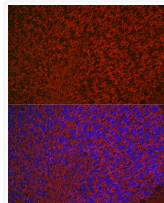
Gene ID	361
Gene Symbol	AQP4
UniProt ID	AQP4_HUMAN
Immunogen Region	256-323
Immunogen Sequence	VEFKRRFKEAFSKAAQQTGK SYMEVEDNRSQVETDDLILK PGVVHVIDVDRGEEKKGDQ SGEVLSSV
Specificity	Recombinant fusion protein containing a sequence corresponding to amino acids 256-323 of human Aquaporin-4 (AQP4) (NP_001641.1).

ADDITIONAL INFORMATION

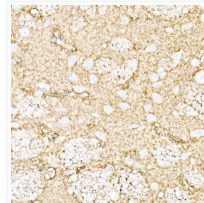
Note **STRICTLY FOR FURTHER SCIENTIFIC RESEARCH USE ONLY (RUO). MUST NOT TO BE USED IN DIAGNOSTIC OR THERAPEUTIC APPLICATIONS.**



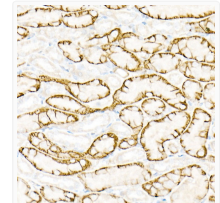
Immunofluorescence analysis of mouse brain cells using Aquaporin-4 (AQP4) Rabbit polyclonal antibody (STJ22661) at dilution of 1:50 (40x lens). Blue: DAPI for nuclear staining.



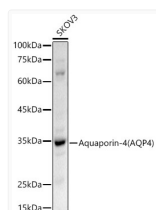
Immunofluorescence analysis of rat brain cells using Aquaporin-4 (AQP4) Rabbit polyclonal antibody (STJ22661) at dilution of 1:50 (40x lens). Blue: DAPI for nuclear staining.



Immunohistochemistry analysis of paraffin-embedded rat brain using Aquaporin-4 (AQP4) Rabbit polyclonal antibody (STJ22661) at dilution of 1:100 (40x lens). Perform high pressure antigen retrieval with 10 mM citrate buffer pH 6.0 before commencing with immunohistochemistry staining protocol.



Immunohistochemistry analysis of paraffin-embedded mouse kidney using Aquaporin-4 (AQP4) Rabbit polyclonal antibody (STJ22661) at dilution of 1:100 (40x lens). Perform high pressure antigen retrieval with 10 mM citrate buffer pH 6.0 before commencing with immunohistochemistry staining protocol.



Western blot analysis of extracts of SKOV3 cells, using Aquaporin-4 (AQP4) antibody (STJ22661) at 1:500 dilution. Secondary antibody: HRP Goat Anti-Rabbit IgG (H+L) (STJS000856) at 1:10000 dilution. Lysates/proteins: 25 µg per lane. Blocking buffer: 3% nonfat dry milk in TBST. Detection: ECL Basic Kit. Exposure time: 60s.