

Anti-ATG4B antibody (1-393) (STJ22639)

GENERAL INFORMATION

Product Type	Primary antibodies
Applications	WB/ELISA
Host / Source	Rabbit
Reactivity	Human

PRODUCT PROPERTIES

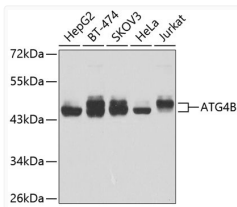
Clonality	Polyclonal
Concentration	Lot specific
Conjugation	Unconjugated
Purification	Affinity purification
Dilution Range	WB:1:500-1:1000 ELISA:Recommended starting concentration is 1 µg/mL. Please optimize the concentration based on your specific assay requirements.
Formulation	PBS with 0.02% Sodium Azide, 50% Glycerol, pH 7.3.
Isotype	IgG
Molecular Weight	Protein Mw: 44kDa Observed Mw: 48kDa
Storage Instruction	Store at -20°C for up to 1 year from the date of receipt, and avoid repeat freeze-thaw cycles.

TARGET INFORMATION

Gene ID	23192
Gene Symbol	ATG4B
UniProt ID	ATG4B_HUMAN
Immunogen Region	1-393
Immunogen Sequence	MDAATLTYDTLRFAEFEDFP ETSEPWILGRKYSIFTEKD EILSDVASRLWFTYRKNFPA IGGTGPTSDTGWGCMLRCGQ MIFAQALVCRHLGRDWRWTQ RKRQPD SYFSLNAFIDRKD SYYSIHQIAQMVGEGK SIG QWYGPNTVAQVLKKLAVFDT WSSLAVHIAMDNTVMEEIR RLCRTSVPCAGATAFPADSD RHCNGFPAGAEVTNRPSWR PLVLLIPLRLGLTDINEAY
Specificity	Recombinant fusion protein containing a sequence corresponding to amino acids 1-393 of human ATG4B (NP_037457.3).

ADDITIONAL INFORMATION

Note STRICTLY FOR FURTHER SCIENTIFIC RESEARCH USE ONLY (RUO). MUST NOT TO BE USED IN DIAGNOSTIC OR THERAPEUTIC APPLICATIONS.



Western blot analysis of extracts of various cell lines, using ATG4B antibody (STJ22639) at 1:1000 dilution. Secondary antibody: HRP Goat Anti-rabbit IgG (H+L) at 1:10000 dilution. Lysates/proteins: 25µg per lane. Blocking buffer: 3% non-fat dry milk in TBST. Detection: ECL Enhanced Kit. Exposure time: 60s.