

Anti-ANXA1 antibody (1-346) (STJ22617)

GENERAL INFORMATION

Product Type	Primary antibodies
Applications	WB/IHC-P/IF/ICC/ELISA
Host / Source	Rabbit
Reactivity	Human/Mouse/Rat

PRODUCT PROPERTIES

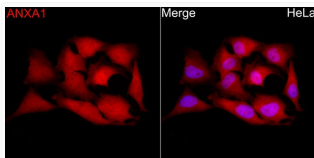
Clonality	Polyclonal
Concentration	Lot specific
Conjugation	Unconjugated
Purification	Affinity purification
Dilution Range	WB:1:500-1:1000 IHC-P:1:50-1:200 IF/ICC:1:50-1:200 ELISA:Recommended starting concentration is 1 Mu g/mL. Please optimize the concentration based on your specific assay requirements.
Formulation	PBS with 0.02% Sodium Azide, 50% Glycerol, pH 7.3.
Isotype	IgG
Molecular Weight	Protein Mw: 39kDa Observed Mw: 38kDa
Storage Instruction	Store at -20°C for up to 1 year from the date of receipt, and avoid repeat freeze-thaw cycles.

TARGET INFORMATION

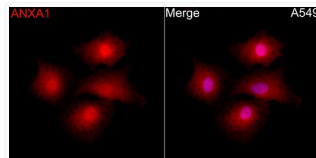
Gene ID	301
Gene Symbol	ANXA1
UniProt ID	ANXA1_HUMAN
Immunogen Region	1-346
Immunogen Sequence	MAMVSEFLKQAWFIENESEQE YVQTVKSSKGGPGSAVSPYP TFPNSSDVAALHKAIMVKGV DEATIIDLTKRNNARQQI KAAYLQETGKPLDETLKKAL TGHLEEVVLALLKTPAQFDA DELRAAMKGLGTDEDTLIEI LASRTNKEIRDINRVYREEL KRDLAKDITSDTSGDFRNAL LSLAKGDRSEDFGVNEDLAD SDARALYEAGERRKGTDVNV FNTILTRSPQLRRVFQK
Specificity	Recombinant fusion protein containing a sequence corresponding to amino acids 1-346 of human ANXA1 (NP_000691.1).

ADDITIONAL INFORMATION

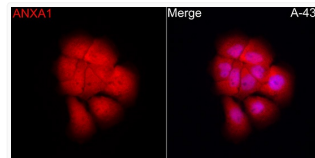
Note STRICTLY FOR FURTHER SCIENTIFIC RESEARCH USE ONLY (RUO). MUST NOT TO BE USED IN DIAGNOSTIC OR THERAPEUTIC APPLICATIONS.



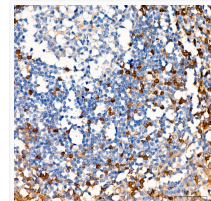
Immunofluorescence analysis of HeLa cells using [KO Validated] ANXA1 Rabbit polyclonal antibody (STJ22617) at dilution of 1:100 (40x lens). Secondary antibody: Cy3 Goat Anti-Rabbit IgG (H+L) at 1:500 dilution. Blue: DAPI for nuclear staining.



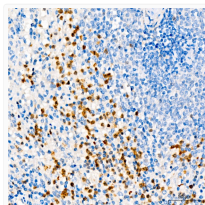
Immunofluorescence analysis of A-549 cells using [KO Validated] ANXA1 Rabbit polyclonal antibody (STJ22617) at dilution of 1:100 (40x lens). Secondary antibody: Cy3 Goat Anti-Rabbit IgG (H+L) at 1:500 dilution. Blue: DAPI for nuclear staining.



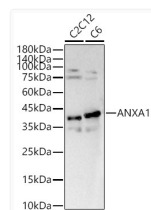
Immunofluorescence analysis of A-431 cells using [KO Validated] ANXA1 Rabbit polyclonal antibody (STJ22617) at dilution of 1:100 (40x lens). Secondary antibody: Cy3 Goat Anti-Rabbit IgG (H+L) at 1:500 dilution. Blue: DAPI for nuclear staining.



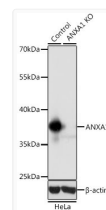
Immunohistochemistry analysis of paraffin-embedded human tonsil using [KO Validated] ANXA1 Rabbit polyclonal antibody (STJ22617) at dilution of 1:50 (40x lens). Perform high pressure antigen retrieval with 10 mM citrate buffer pH 6. 0 before commencing with immunohistochemistry staining protocol.



Immunohistochemistry analysis of paraffin-embedded human spleen using [KO Validated] ANXA1 Rabbit polyclonal antibody (STJ22617) at dilution of 1:50 (40x lens). Perform high pressure antigen retrieval with 10 mM citrate buffer pH 6. 0 before commencing with immunohistochemistry staining protocol.



Western blot analysis of various lysates, using ANXA1 antibody (STJ22617) at 1:700 dilution. Secondary antibody: HRP Goat Anti-Rabbit IgG (H+L) (STJS000856) at 1:10000 dilution. Lysates/proteins: 25 Mu g per lane. Blocking buffer: 3% nonfat dry milk in TBST. Detection: ECL Basic Kit. Exposure time: 90s.



Western blot analysis of extracts from normal (control) and ANXA1 knockout (KO) HeLa cells, using ANXA1 antibody (STJ22617) at 1:1000 dilution. Secondary antibody: HRP Goat Anti-Rabbit IgG (H+L) (STJS000856) at 1:10000 dilution. Lysates/proteins: 25 Mu g per lane. Blocking buffer: 3% nonfat dry milk in TBST. Detection: ECL Basic Kit. Exposure time: 1s.