

Anti-AMACR antibody (1-138) (STJ22599)

GENERAL INFORMATION

Product Type	Primary antibodies
Applications	WB/IHC-P/IF/ICC/ELISA
Host / Source	Rabbit
Reactivity	Human/Mouse/Rat

PRODUCT PROPERTIES

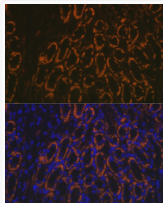
Clonality	Polyclonal
Concentration	Lot specific
Conjugation	Unconjugated
Purification	Affinity purification
Dilution Range	WB:1:500-1:2000 IHC-P:1:50-1:200 IF/CC:1:50-1:200 ELISA:Recommended starting concentration is 1 μ g/mL. Please optimize the concentration based on your specific assay requirements.
Formulation	PBS with 0.01% Thimerosal, 50% Glycerol, pH 7.3.
Isotype	IgG
Molecular Weight	Protein Mw: 42kDa Observed Mw: 42kDa/43kDa
Storage Instruction	Store at -20°C for up to 1 year from the date of receipt, and avoid repeat freeze-thaw cycles.

TARGET INFORMATION

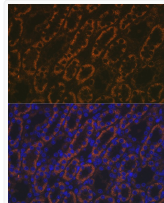
Gene ID	23600
Gene Symbol	AMACR
UniProt ID	AMACR_HUMAN
Immunogen Region	1-138
Immunogen Sequence	MALQGISVVELSGLAPGPFC AMVLADFGARVVRVDRPGSR YDVSRLGRGKRSLVLDLKQP RGAAVLRRRLCKRSDVLLPEPFRRGVMEKLLQGLPEILQRENPLIYARLSGFGQSGSFCRLA GHDINYLLALSGVLSKIGR
Specificity	Recombinant fusion protein containing a sequence corresponding to amino acids 1-138 of human AMACR (NP_055139.4).

ADDITIONAL INFORMATION

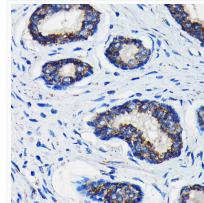
Note **STRICTLY FOR FURTHER SCIENTIFIC RESEARCH USE ONLY (RUO). MUST NOT TO BE USED IN DIAGNOSTIC OR THERAPEUTIC APPLICATIONS.**



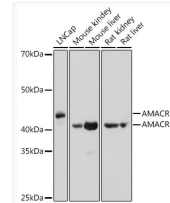
Immunofluorescence analysis of mouse kidney using AMACR Rabbit polyclonal antibody (STJ22599) at dilution of 1:100 (40x lens). Blue: DAPI for nuclear staining.



Immunofluorescence analysis of rat kidney using AMACR Rabbit polyclonal antibody (STJ22599) at dilution of 1:100 (40x lens). Blue: DAPI for nuclear staining.



Immunohistochemistry analysis of paraffin-embedded human prostate cancer using AMACR Rabbit polyclonal antibody (STJ22599) at dilution of 1:100 (40x lens). Perform microwave antigen retrieval with 10 mM Tris/EDTA buffer pH 9.0 before commencing with immunohistochemistry staining protocol.



Western blot analysis of extracts of various cell lines, using AMACR antibody (STJ22599) at 1:1000 dilution. Secondary antibody: HRP Goat Anti-Rabbit IgG (H+L) (STJ22599) at 1:10000 dilution. Lysates/proteins: 25 μ g per lane. Blocking buffer: 3% nonfat dry milk in TBST. Detection: ECL Basic Kit. Exposure time: 1s.