

Anti-ALOX5 antibody (1-200) (STJ22592)

GENERAL INFORMATION

Product Type	Primary antibodies
Applications	WB/IHC-P/IF/ICC/ELISA
Host / Source	Rabbit
Reactivity	Human/Mouse/Rat

PRODUCT PROPERTIES

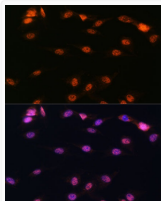
Clonality	Polyclonal
Concentration	Lot specific
Conjugation	Unconjugated
Purification	Affinity purification
Dilution Range	WB:1:100-1:500 IHC-P:1:50-1:200 IF/CC:1:50-1:200 ELISA:Recommended starting concentration is 1 Mu g/mL. Please optimize the concentration based on your specific assay requirements.
Formulation	PBS with 0.02% Sodium Azide, 50% Glycerol, pH 7.3.
Isotype	IgG
Molecular Weight	Protein Mw: 78kDa Observed Mw: 75kDa
Storage Instruction	Store at -20°C for up to 1 year from the date of receipt, and avoid repeat freeze-thaw cycles.

TARGET INFORMATION

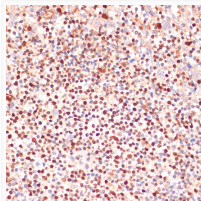
Gene ID	240
Gene Symbol	ALOX5
UniProt ID	LOX5_HUMAN
Immunogen Region	1-200
Immunogen Sequence	MPSYTVTIVATGSQWFAGTDD YIYLSLVGSAGCSEKHLDDK PFYNDFERGAVDSYDVTVDE ELGEIQLVRIEKRYWLNDD WYLKYITLKTTPHGDYIEFPC YRWITGDVEVVLDRDGRAKLA RDDQIHILKQHRKELETRQ KQYRWMEWNPGFPLSIDAKC HKDLPRDIQFDSEKGVDFVL NYSKAMENLFINRFMHMFQS
Specificity	Recombinant fusion protein containing a sequence corresponding to amino acids 1-200 of ALOX5 (NP_000689.1).

ADDITIONAL INFORMATION

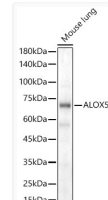
Note **STRICTLY FOR FURTHER SCIENTIFIC RESEARCH USE ONLY (RUO). MUST NOT TO BE USED IN DIAGNOSTIC OR THERAPEUTIC APPLICATIONS.**



Immunofluorescence analysis of C6 cells using ALOX5 antibody (STJ22592) at dilution of 1:100. Blue: DAPI for nuclear staining.



Immunohistochemistry analysis of paraffin-embedded human tonsil using ALOX5 antibody (STJ22592) at dilution of 1:100 (40x lens). Perform microwave antigen retrieval with 10 mM PBS buffer pH 7. 2 before commencing with immunohistochemistry staining protocol.



Western blot analysis of Mouse lung, using ALOX5 antibody (STJ22592) at 1:500 dilution. Secondary antibody: HRP Goat Anti-Rabbit IgG (H+L) (STJS000856) at 1:10000 dilution. Lysates/proteins: 25 Mu g per lane. Blocking buffer: 3% nonfat dry milk in TBST. Detection: ECL Basic Kit. Exposure time: 30s.