

Anti-ALDOB antibody (1-200) (STJ22585)

GENERAL INFORMATION

Product Type	Primary antibodies
Applications	WB/IF/ICC/ELISA
Host / Source	Rabbit
Reactivity	Human/Mouse/Rat

PRODUCT PROPERTIES

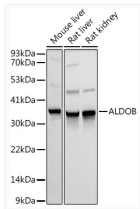
Clonality	Polyclonal
Concentration	Lot specific
Conjugation	Unconjugated
Purification	Affinity purification
Dilution Range	WB:1:500-1:1000 IF/CC:1:50-1:200 ELISA:Recommended starting concentration is 1 μ g/mL. Please optimize the concentration based on your specific assay requirements.
Formulation	PBS with 0.02% Sodium Azide, 50% Glycerol, pH 7.3.
Isotype	IgG
Molecular Weight	Protein Mw: 39kDa Observed Mw: 40kDa
Storage Instruction	Store at -20°C for up to 1 year from the date of receipt, and avoid repeat freeze-thaw cycles.

TARGET INFORMATION

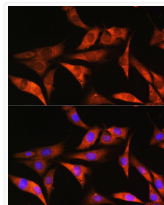
Gene ID	229
Gene Symbol	ALDOB
UniProt ID	ALDOB_HUMAN
Immunogen Region	1-200
Immunogen Sequence	MAHRFPALTQEQKELSEIA QSIVANGKGI LAADSVGTM GNRLQRIKVENTEENRRQFR ELFSDSSINQSIGGVILF HETLYQKDSQGLFRNLIK KGI VVGIKLDQGGAPLAGTN KETTIQGLDGLSERCAQYK DGVDGKWRVRLRIADQCPS SLAIQENANALARYASICQQ NGLVPIVEPEVIPDGDHDL
Specificity	Recombinant fusion protein containing a sequence corresponding to amino acids 1-200 of human ALDOB (NP_000026.2).

ADDITIONAL INFORMATION

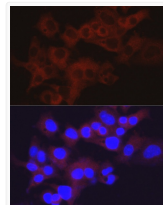
Note **STRICTLY FOR FURTHER SCIENTIFIC RESEARCH USE ONLY (RUO). MUST NOT TO BE USED IN DIAGNOSTIC OR THERAPEUTIC APPLICATIONS.**



Western blot analysis of extracts of various cell lines, using ALDOB antibody (STJ22585) at 1:1000 dilution. Secondary antibody: HRP Goat Anti-rabbit IgG (H+L) (STJ000856) at 1:10000 dilution. Lysates/proteins: 25 μ g per lane. Blocking buffer: 3% non-fat dry milk in TBST. Detection: ECL Basic Kit. Exposure time: 1s.



Immunofluorescence analysis of NIH/3T3 cells using ALDOB rabbit polyclonal antibody (STJ22585) at dilution of 1:100. Blue: DAPI for nuclear staining.



Immunofluorescence analysis of HepG2 cells using ALDOB rabbit polyclonal antibody (STJ22585) at dilution of 1:50 (40x lens). Blue: DAPI for nuclear staining.