

Anti-ALDH2 antibody (321-480) (STJ22581)

GENERAL INFORMATION

Product Type	Primary antibodies
Applications	WB/IHC-P/IF/ICC/ELISA
Host / Source	Rabbit
Reactivity	Human/Mouse/Rat

PRODUCT PROPERTIES

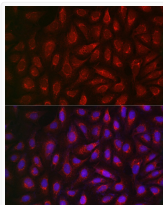
Clonality	Polyclonal
Concentration	Lot specific
Conjugation	Unconjugated
Purification	Affinity purification
Dilution Range	WB:1:500-1:1000 IHC-P:1:50-1:200 IF/CC:1:50-1:200 ELISA:Recommended starting concentration is 1 µg/mL. Please optimize the concentration based on your specific assay requirements.
Formulation	PBS with 0.05% Proclin300, 50% Glycerol, pH 7.3.
Isotype	IgG
Molecular Weight	Protein Mw: 56kDa Observed Mw: 50-56kDa
Storage Instruction	Store at -20°C for up to 1 year from the date of receipt, and avoid repeat freeze-thaw cycles.

TARGET INFORMATION

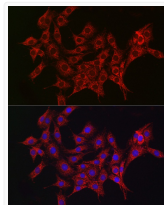
Gene ID	217
Gene Symbol	ALDH2
UniProt ID	ALDH2_HUMAN
Immunogen Region	321-480
Immunogen Sequence	AGSRTFVQEDIYDEFVERSV ARAKSRVVGPNPFDKTEQGP QVDETQFKILGYINTGKQE GAKLLCGGGIAADRGYFIQP TVFGDVQDGMTIAKEEIFGP VMQILKFKTIEEVVGRANNS TYGLAAAVFTKDLKANYLS QALQAGTVWVNCYDVFGAQS
Specificity	Recombinant fusion protein containing a sequence corresponding to amino acids 321-480 of human ALDH2 (NP_000681.2).

ADDITIONAL INFORMATION

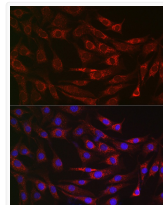
Note STRICTLY FOR FURTHER SCIENTIFIC RESEARCH USE ONLY (RUO). MUST NOT TO BE USED IN DIAGNOSTIC OR THERAPEUTIC APPLICATIONS.



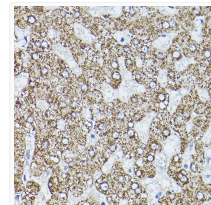
Immunofluorescence analysis of U2OS cells using ALDH2 Rabbit polyclonal antibody (STJ22581) at dilution of 1:200 (40x lens). Blue: DAPI for nuclear staining.



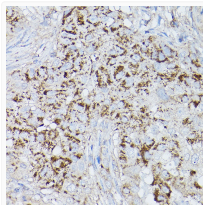
Immunofluorescence analysis of PC-12 cells using ALDH2 Rabbit polyclonal antibody (STJ22581) at dilution of 1:200 (40x lens). Blue: DAPI for nuclear staining.



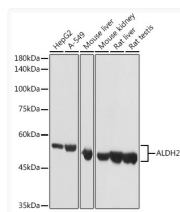
Immunofluorescence analysis of NIH/3T3 cells using ALDH2 Rabbit polyclonal antibody (STJ22581) at dilution of 1:200 (40x lens). Blue: DAPI for nuclear staining.



Immunohistochemistry analysis of paraffin-embedded human liver using ALDH2 Rabbit polyclonal antibody (STJ22581) at dilution of 1:200 (40x lens). Perform high pressure antigen retrieval with 10 mM citrate buffer pH 6.0 before commencing with immunohistochemistry staining protocol.



Immunohistochemistry analysis of paraffin-embedded human breast cancer using ALDH2 Rabbit polyclonal antibody (STJ22581) at dilution of 1:200 (40x lens). Perform high pressure antigen retrieval with 10 mM citrate buffer pH 6.0 before commencing with immunohistochemistry staining protocol.



Western blot analysis of extracts of various cell lines, using ALDH2 antibody (STJ22581) at 1:1000 dilution. Secondary antibody: HRP Goat Anti-Rabbit IgG (H+L) (STJS000856) at 1:10000 dilution. Lysates/proteins: 25 µg per lane. Blocking buffer: 3% nonfat dry milk in TBST. Detection: ECL Basic Kit. Exposure time: 1s.