

## Anti-ALDH1B1 antibody (278-517) (STJ22580)

### GENERAL INFORMATION

Product Type	Primary antibodies
Applications	WB/IF/ICC/ELISA
Host / Source	Rabbit
Reactivity	Human/Mouse/Rat

### PRODUCT PROPERTIES

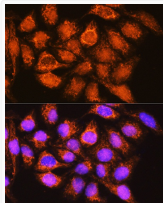
Clonality	Polyclonal
Concentration	Lot specific
Conjugation	Unconjugated
Purification	Affinity purification
Dilution Range	WB:1:500-1:2000 IF/CC:1:50-1:200 ELISA:Recommended starting concentration is 1 Mu g/mL. Please optimize the concentration based on your specific assay requirements.
Formulation	PBS with 0.02% Sodium Azide, 50% Glycerol, pH 7.3.
Isotype	IgG
Molecular Weight	Protein Mw: 57kDa Observed Mw: 57kDa
Storage Instruction	Store at -20°C for up to 1 year from the date of receipt, and avoid repeat freeze-thaw cycles.

### TARGET INFORMATION

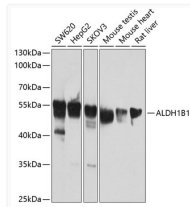
Gene ID	<a href="#">219</a>
Gene Symbol	<a href="#">ALDH1B1</a>
UniProt ID	<a href="#">AL1B1_HUMAN</a>
Immunogen Region	278-517
Immunogen Sequence	NLKRVTLELGGKSPSIVLAD ADMEHAVEQCHEALFFNMGQ CCCAGSRTFVEESIYNEFLE RTVEKAKQRKVGPNPFELDTQ QGPOVDKEQFERYLGYIQLG QKEGAKLLCGGERFGERGFF IKPTVFGGVQDDMRIAKEEI FGPVQPLFKFKKIEEVVERA NNTRYGLAAAVFTRDLDKAM YFTQALQAGTVVWNTYNIIVT CHTPFGGFKESGNRELGED GLKAYTEVKTVTIKVPQKN
Specificity	Recombinant fusion protein containing a sequence corresponding to amino acids 278-517 of human ALDH1B1 (NP_000683.3).

### ADDITIONAL INFORMATION

Note STRICTLY FOR FURTHER SCIENTIFIC RESEARCH USE ONLY (RUO). MUST NOT TO BE USED IN DIAGNOSTIC OR THERAPEUTIC APPLICATIONS.



Immunofluorescence analysis of HeLa cells using ALDH1B1 Rabbit polyclonal antibody (STJ22580) at dilution of 1:100. Blue: DAPI for nuclear staining.



Western blot analysis of extracts of various cell lines, using ALDH1B1 antibody (STJ22580) at 1:1000 dilution. Secondary antibody: HRP Goat Anti-Rabbit IgG (H+L) (STJS000856) at 1:10000 dilution. Lysates/proteins: 25 Mu g per lane. Blocking buffer: 3% nonfat dry milk in TBST. Detection: ECL Basic Kit. Exposure time: 30s.