

Anti-ALB antibody (25-609) (STJ22575)

GENERAL INFORMATION

Product Type	Primary antibodies
Applications	WB/IF/ICC/ELISA
Host / Source	Rabbit
Reactivity	Human/Mouse/Rat

PRODUCT PROPERTIES

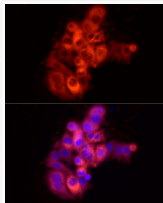
Clonality	Polyclonal
Concentration	Lot specific
Conjugation	Unconjugated
Purification	Affinity purification
Dilution Range	WB:1:500-1:1000 IF/CC:1:50-1:200 ELISA:Recommended starting concentration is 1 μ g/mL. Please optimize the concentration based on your specific assay requirements.
Formulation	PBS with 0.09% Sodium Azide, 50% Glycerol, pH7.3.
Isotype	IgG
Molecular Weight	Protein Mw: 69kDa Observed Mw: 69kDa
Storage Instruction	Store at -20°C for up to 1 year from the date of receipt, and avoid repeat freeze-thaw cycles.

TARGET INFORMATION

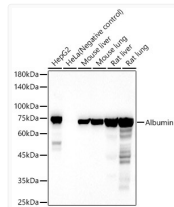
Gene ID	213
Gene Symbol	ALB
UniProt ID	ALBU_HUMAN
Immunogen Region	25-609
Immunogen Sequence	DAHKSEVAHRFKDLGEEENFK ALVLI AFAQYLQQCPFEDHV KLVNEVTEFAKTCVADESAE NCDKSLHTLFGDKLCTVATL RETYGEMADCCAKQEPERNE CFLQHKDDNPPLPRLVRPEV DVMCTAFHDNEETFLKKYLY EIARRHPYFYAPELLFFAKR YKAAFTCCQAADKAACLLP KLDEL RDEGKASSAKQRLKC ASLQKFGERAFAKAWAVARLS QRFPKAEFAEVSKLVTDLT
Specificity	Recombinant fusion protein containing a sequence corresponding to amino acids 25-609 of human Albumin (NP_000468.1).

ADDITIONAL INFORMATION

Note **STRICTLY FOR FURTHER SCIENTIFIC RESEARCH USE ONLY (RUO). MUST NOT TO BE USED IN DIAGNOSTIC OR THERAPEUTIC APPLICATIONS.**



Immunofluorescence analysis of HepG2 cells using Albumin Rabbit polyclonal antibody (STJ22575) at dilution of 1:100 (40x lens). Secondary antibody: Cy3 Goat Anti-Rabbit IgG (H+L) at 1:500 dilution. Blue: DAPI for nuclear staining.



Western blot analysis of various lysates, using Albumin Rabbit polyclonal antibody (STJ22575) at 1:500 dilution. Secondary antibody: HRP Goat Anti-Rabbit IgG (H+L) (STJS000856) at 1:10000 dilution. Lysates/proteins: 25 μ g per lane. Blocking buffer: 3% nonfat dry milk in TBST. Detection: ECL Basic Kit. Exposure time: 30s.