

## Anti-ALB antibody (25-609) (STJ22574)

### GENERAL INFORMATION

Product Type	Primary antibodies
Applications	WB/IHC-P/IF/ICC/ELISA
Host / Source	Rabbit
Reactivity	Human/Mouse/Rat

### PRODUCT PROPERTIES

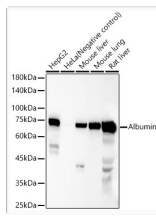
Clonality	Polyclonal
Concentration	Lot specific
Conjugation	Unconjugated
Purification	Affinity purification
Dilution Range	WB:1:100-1:500 IHC-P:1:50-1:100 IF/CC:1:50-1:200 ELISA:Recommended starting concentration is 1 µg/mL. Please optimize the concentration based on your specific assay requirements.
Formulation	PBS with 0.02% Sodium Azide, 50% Glycerol, pH 7.3.
Isotype	IgG
Molecular Weight	Protein Mw: 69kDa Observed Mw: 69kDa
Storage Instruction	Store at -20°C for up to 1 year from the date of receipt, and avoid repeat freeze-thaw cycles.

### TARGET INFORMATION

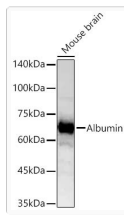
Gene ID	<a href="#">213</a>
Gene Symbol	<a href="#">ALB</a>
UniProt ID	<a href="#">ALBU_HUMAN</a>
Immunogen Region	25-609
Immunogen Sequence	DAHKSEVAHRFKDLGEENFK ALVLI AFAQYLQQCPFEDHV KLVNEVTEFAKTCVADESAE NCDKSLHTLFGDKLCTVATL RETY GEMADCCAKQEPERNE CFLQHKDDNP NLPRLVRPEV DVMCTAFHDNEETFLKKYLY EIARRHPYFYAPELLFFAKR YKAAFTECCQAADKAACLLP KLDEL RDEGKASSAKQRLKC ASLQKFGERAFKAWAVARLS QRFPKAEFAEVSKLVTDLT
Specificity	Recombinant fusion protein containing a sequence corresponding to amino acids 25-609 of human Albumin (NP_000468.1).

### ADDITIONAL INFORMATION

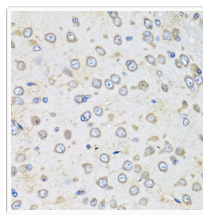
Note	STRICTLY FOR FURTHER SCIENTIFIC RESEARCH USE ONLY (RUO). MUST NOT TO BE USED IN DIAGNOSTIC OR THERAPEUTIC APPLICATIONS.
------	---



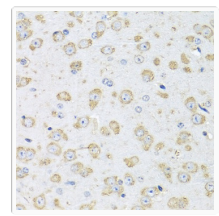
Western blot analysis of various lysates, using Albumin Rabbit pAb (STJ22574) at 1:400 dilution. Secondary antibody: HRP-conjugated Goat anti-Rabbit IgG (H+L) (STJS000856) at 1:10000 dilution. Lysates/proteins: 25 Mu g per lane. Blocking buffer: 3% nonfat dry milk in TBST. Detection: ECL Basic Kit Exposure time: 30s.



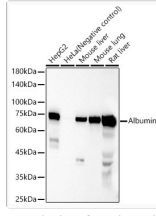
Western blot analysis of lysates from Mouse brain using Albumin Rabbit pAb (STJ22574) at 1:600 dilution. Secondary antibody: HRP-conjugated Goat anti-Rabbit IgG (H+L) (STJS000856) at 1:10000 dilution. Lysates/proteins: 25 Mu g per lane. Blocking buffer: 3% nonfat dry milk in TBST. Detection: ECL Basic Kit Exposure time:10s.



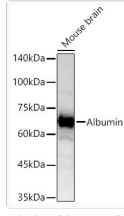
Immunohistochemistry analysis of paraffin-embedded Rat brain using Albumin Rabbit pAb (STJ22574) at dilution of 1:100 (40x lens). Microwave antigen retrieval performed with 0.01M PBS Buffer (pH 7.2) prior to immunohistochemistry staining.



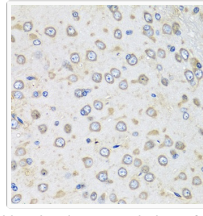
Immunohistochemistry analysis of paraffin-embedded Mouse brain using Albumin Rabbit pAb (STJ22574) at dilution of 1:100 (40x lens). Microwave antigen retrieval performed with 0.01M PBS Buffer (pH 7.2) prior to immunohistochemistry staining.



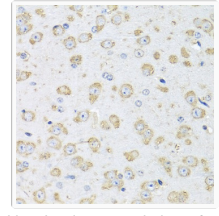
Western blot analysis of various lysates, using Albumin Rabbit pAb (STJ22574) at 1:400 dilution. Secondary antibody: HRP-conjugated Goat anti-Rabbit IgG (H+L) (STJS000856) at 1:10000 dilution. Lysates/proteins: 25 Mu g per lane. Blocking buffer: 3% nonfat dry milk in TBST. Detection: ECL Basic Kit Exposure time: 30s.



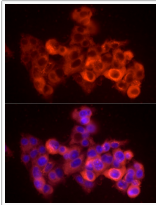
Western blot analysis of lysates from Mouse brain using Albumin Rabbit pAb (STJ22574) at 1:600 dilution. Secondary antibody: HRP-conjugated Goat anti-Rabbit IgG (H+L) (STJS000856) at 1:10000 dilution. Lysates/proteins: 25 Mu g per lane. Blocking buffer: 3% nonfat dry milk in TBST. Detection: ECL Basic Kit Exposure time:10s.



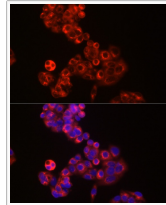
Immunohistochemistry analysis of paraffin-embedded Rat brain using Albumin Rabbit pAb (STJ22574) at dilution of 1:100 (40x lens). Microwave antigen retrieval performed with 0.01M PBS Buffer (pH 7.2) prior to immunohistochemistry staining.



Immunohistochemistry analysis of paraffin-embedded Mouse brain using Albumin Rabbit pAb (STJ22574) at dilution of 1:100 (40x lens). Microwave antigen retrieval performed with 0.01M PBS Buffer (pH 7.2) prior to immunohistochemistry staining.



Immunofluorescence analysis of HepG2 cells using Albumin Rabbit pAb (STJ22574) at dilution of 1:50 (40x lens). Secondary antibody: Cy3-conjugated Goat anti-Rabbit IgG (H+L) (STJS001166) at 1:500 dilution. Blue: DAPI for nuclear staining.



Immunofluorescence analysis of HepG2 cells using Albumin Rabbit pAb (STJ22574) at dilution of 1:50 (40x lens). Secondary antibody: Cy3-conjugated Goat anti-Rabbit IgG (H+L) (STJS001166) at 1:500 dilution. Blue: DAPI for nuclear staining.