

Anti-AKR1A1 antibody (1-325) (STJ22566)

GENERAL INFORMATION

Product Type	Primary antibodies
Applications	WB/IHC-P/ELISA
Host / Source	Rabbit
Reactivity	Human/Mouse/Rat

PRODUCT PROPERTIES

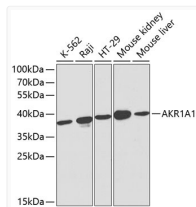
Clonality	Polyclonal
Concentration	Lot specific
Conjugation	Unconjugated
Purification	Affinity purification
Dilution Range	WB:1:500-1:2000 IHC-P:1:50-1:200 ELISA:Recommended starting concentration is 1 μ g/mL. Please optimize the concentration based on your specific assay requirements.
Formulation	PBS with 0.02% Sodium Azide, 50% Glycerol, pH 7.3.
Isotype	IgG
Molecular Weight	Protein Mw: 37kDa Observed Mw: 37kDa
Storage Instruction	Store at -20°C for up to 1 year from the date of receipt, and avoid repeat freeze-thaw cycles.

TARGET INFORMATION

Gene ID	10327
Gene Symbol	AKR1A1
UniProt ID	AK1A1_HUMAN
Immunogen Region	1-325
Immunogen Sequence	MAASCVLLHTGQKMPILIGL TWKSEPGQVKAADVYALSVG YRHIDCAAAYGNEPEIGEAL KEDVGPVKAVPREELFVTSK LWNTKHHPEDEVPAALRKTLLA DLQLEYLDLYLMHWPYAFER GDNPFKPADGTICYDSTHY KETWKALEALVAKGLVQALG LSNFNRSRQIDDILSVASVRP AVLQVECHPYLAQNELIAHC QARGLEVTAYSPLGSSDRAW RDPDEPVLLEEPVVLALAE
Specificity	Recombinant fusion protein containing a sequence corresponding to amino acids 1-325 of human AKR1A1 (NP_006057.1).

ADDITIONAL INFORMATION

Note STRICTLY FOR FURTHER SCIENTIFIC RESEARCH USE ONLY (RUO). MUST NOT TO BE USED IN DIAGNOSTIC OR THERAPEUTIC APPLICATIONS.



Western blot analysis of extracts of various cell lines, using AKR1A1 antibody (STJ22566) at 1:1000 dilution. Secondary antibody: HRP Goat Anti-Rabbit IgG (H+L) (STJS000856) at 1:10000 dilution. Lysates/proteins: 25 μ g per lane. Blocking buffer: 3% nonfat dry milk in TBST.