

Anti-AHR antibody (619-848) (STJ22550)

GENERAL INFORMATION

Product Type	Primary antibodies
Applications	WB/IHC-P/IF/ICC/ELISA
Host / Source	Rabbit
Reactivity	Human/Mouse/Rat

PRODUCT PROPERTIES

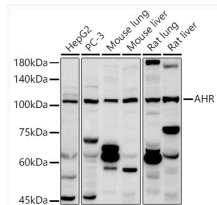
Clonality	Polyclonal
Concentration	Lot specific
Conjugation	Unconjugated
Purification	Affinity purification
Dilution Range	WB:1:1000-1:5000 IHC-P:1:50-1:200 IF/CC:1:50-1:200 ELISA:Recommended starting concentration is 1 Mu g/mL. Please optimize the concentration based on your specific assay requirements.
Formulation	PBS with 0.05% Proclin300, 50% Glycerol, pH 7.3.
Isotype	IgG
Molecular Weight	Protein Mw: 96kDa Observed Mw: 100kDa
Storage Instruction	Store at -20°C for up to 1 year from the date of receipt, and avoid repeat freeze-thaw cycles.

TARGET INFORMATION

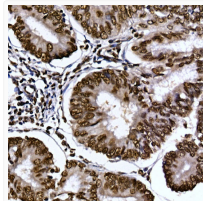
Gene ID	196
Gene Symbol	AHR
UniProt ID	AHR_HUMAN
Immunogen Region	619-848
Immunogen Sequence	LEQQQHHQKQVVVEPQQQL CQKMKHMVNGMFENWNSNQ FVPFNGPQQDPQQYNVFTDL HGISQEFYKSEMSMPYQK NFISCNQVLPQHSKCTELD YPMGSFEPSPYPTTSSLEDF VTCLQLPENQKHGLNPSAI ITPQTCYAGAVSMYQCQPEP QHTHVGMQYNPVLPQQAF LNKFGNGVLNETYPAELNNI NNTQTTHLQPLHHPSEARP FPDLTSSGFL
Specificity	Recombinant fusion protein containing a sequence corresponding to amino acids 619-848 of human AHR (NP_001612.1).

ADDITIONAL INFORMATION

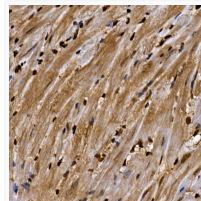
Note STRICTLY FOR FURTHER SCIENTIFIC RESEARCH USE ONLY (RUO). MUST NOT TO BE USED IN DIAGNOSTIC OR THERAPEUTIC APPLICATIONS.



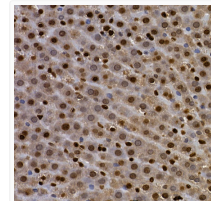
Western blot analysis of extracts of various cell lines, using AHR antibody (STJ22550) at 1:1000 dilution. Secondary antibody: HRP Goat Anti-rabbit IgG (H+L) (STJS000856) at 1:10000 dilution. Lysates/proteins: 25 Mu g per lane. Blocking buffer: 3% non-fat dry milk in TBST. Detection: ECL Basic Kit. Exposure time: 120s.



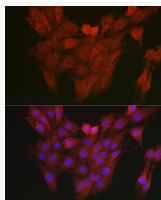
Immunohistochemistry analysis of paraffin-embedded human endometrium cancer using AHR rabbit polyclonal antibody (STJ22550) at dilution of 1:100 (40x lens). Perform high pressure antigen retrieval with 10 mM citrate buffer pH 6. 0 before commencing with immunohistochemistry staining protocol.



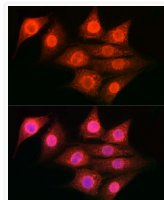
Immunohistochemistry analysis of paraffin-embedded mouse heart using AHR rabbit polyclonal antibody (STJ22550) at dilution of 1:100 (40x lens). Perform high pressure antigen retrieval with 10 mM citrate buffer pH 6. 0 before commencing with immunohistochemistry staining protocol.



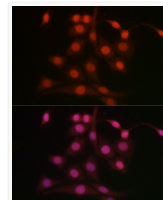
Immunohistochemistry analysis of paraffin-embedded rat liver using AHR rabbit polyclonal antibody (STJ22550) at dilution of 1:100 (40x lens). Perform high pressure antigen retrieval with 10 mM citrate buffer pH 6. 0 before commencing with immunohistochemistry staining protocol.



Immunofluorescence analysis of PC-12 cells using AHR antibody (STJ22550) at dilution of 1:150. Blue: DAPI for nuclear staining.



Immunofluorescence analysis of NIH/3T3 cells using AHR rabbit polyclonal antibody (STJ22550) at dilution of 1:100 (40x lens). Blue: DAPI for nuclear staining.



Immunofluorescence analysis of PC-12 cells using AHR rabbit polyclonal antibody (STJ22550) at dilution of 1:100 (40x lens). Blue: DAPI for nuclear staining.