

Anti-GRK2 antibody (440-689) (STJ22534)

GENERAL INFORMATION

Product Type	Primary antibodies
Applications	WB/IHC-P/ELISA
Host / Source	Rabbit
Reactivity	Human/Mouse/Rat

PRODUCT PROPERTIES

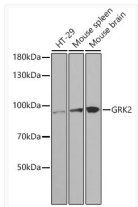
Clonality	Polyclonal
Concentration	Lot specific
Conjugation	Unconjugated
Purification	Affinity purification
Dilution Range	WB:1:500-1:2000 IHC-P:1:50-1:200 ELISA:Recommended starting concentration is 1 µg/mL. Please optimize the concentration based on your specific assay requirements.
Formulation	PBS with 0.02% Sodium Azide, 50% Glycerol, pH 7.3.
Isotype	IgG
Molecular Weight	Protein Mw: 80kDa Observed Mw: 80kDa
Storage Instruction	Store at -20°C for up to 1 year from the date of receipt, and avoid repeat freeze-thaw cycles.

TARGET INFORMATION

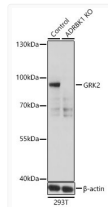
Gene ID	156
Gene Symbol	GRK2
UniProt ID	ARBK1_HUMAN
Immunogen Region	440-689
Immunogen Sequence	LGRGAQEVKESPFRRSLDWQ MVFLQKYPPPLIPPRGEVNA ADAFDIGSFDEEDTKGIKLL DSDQELYRNFLTISRWQQ EVAETVFDINAETDRLEAR KKAKNKQLGHEEDYALGKDC IMHGYSKMGNPFLTQWQRR YFYLPNRLLEWRGEGEAPQS LLTMEEQSVEETQIKERKC LLLKIRGGKQFILQCSDSPE LVQWKKELRDAYREAQQLVQ RVPKMKNKPRSPVVELSKV
Specificity	Recombinant fusion protein containing a sequence corresponding to amino acids 440-689 of human GRK2 (NP_001610.2).

ADDITIONAL INFORMATION

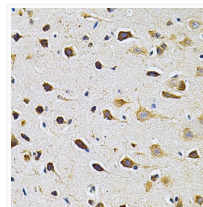
Note STRICTLY FOR FURTHER SCIENTIFIC RESEARCH USE ONLY (RUO). MUST NOT TO BE USED IN DIAGNOSTIC OR THERAPEUTIC APPLICATIONS.



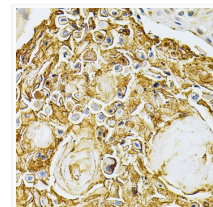
Western blot analysis of extracts of various cell lines, using GRK2 antibody (STJ22534) at 1:1000 dilution. Secondary antibody: HRP Goat Anti-rabbit IgG (H+L) (STJS000856) at 1:10000 dilution. Lysates/proteins: 25 µg per lane. Blocking buffer: 3% non-fat dry milk in TBST.



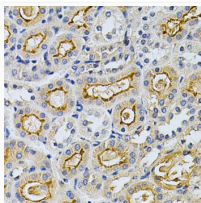
Western blot analysis of extracts from normal (control) and GRK2 knockout (KO) 293T cells, using GRK2 antibody (STJ22534) at 1:500 dilution. Secondary antibody: HRP Goat Anti-rabbit IgG (H+L) (STJS000856) at 1:10000 dilution. Lysates/proteins: 25 µg per lane. Blocking buffer: 3% non-fat dry milk in TBST. Detection: ECL Basic Kit. Exposure time: 1s.



Immunohistochemistry analysis of paraffin-embedded rat brain using GRK2 Antibody (STJ22534) at dilution of 1:200 (40x lens). Perform microwave antigen retrieval with 10 mM PBS buffer pH 7.2 before commencing with immunohistochemistry staining protocol.



Immunohistochemistry analysis of paraffin-embedded human esophageal cancer using GRK2 Antibody (STJ22534) at dilution of 1:200 (40x lens). Perform microwave antigen retrieval with 10 mM PBS buffer pH 7.2 before commencing with immunohistochemistry staining protocol.



Immunohistochemistry analysis of paraffin-embedded mouse kidney using GRK2 Antibody (STJ22534) at dilution of 1:200 (40x lens). Perform microwave antigen retrieval with 10 mM PBS buffer pH 7.2 before commencing with immunohistochemistry staining protocol.