

Anti-ADH5 antibody (1-374) (STJ22518)

GENERAL INFORMATION

Product Type	Primary antibodies
Applications	WB/IF/ICC/ELISA
Host / Source	Rabbit
Reactivity	Human/Mouse/Rat

PRODUCT PROPERTIES

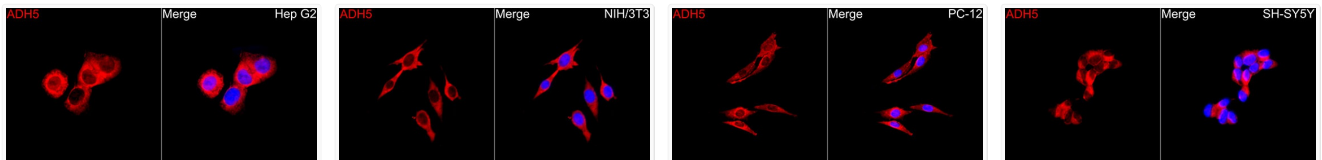
Clonality	Polyclonal
Concentration	Lot specific
Conjugation	Unconjugated
Purification	Affinity purification
Dilution Range	WB:1:500-1:2000 IF/CC:1:50-1:200 ELISA:Recommended starting concentration is 1 µg/mL. Please optimize the concentration based on your specific assay requirements.
Formulation	PBS with 0.02% Sodium Azide, 50% Glycerol, pH 7.3.
Isotype	IgG
Molecular Weight	Protein Mw: 40kDa Observed Mw:
Storage Instruction	Store at -20°C for up to 1 year from the date of receipt, and avoid repeat freeze-thaw cycles.

TARGET INFORMATION

Gene ID	128
Gene Symbol	ADH5
UniProt ID	ADHX_HUMAN
Immunogen Region	1-374
Immunogen Sequence	MANEVIKCKAAVAWEAGKPL SIEEIEVAPPKAHEVRIKII ATAVCHTDAYTLSGADPEGC FPVILGHEGAGIVESVGEV TKLKAGDTVIPLYIPQCGEC KFCLNPKTNLCQKIRVTQGK GLMPDGTSRFTCKGKILHY MGTSTFSEYTVVADISVAKI DPLAPLDKVCLLGCGISTGY GAAVNTAKLEPGSVCAVFLG GGVGLAVIMGCKVAGASRII GVDINKDKFARAKEFGATE
Specificity	Recombinant fusion protein containing a sequence corresponding to amino acids 1-374 of human ADH5/GSNOR (NP_000662.3).

ADDITIONAL INFORMATION

Note STRICTLY FOR FURTHER SCIENTIFIC RESEARCH USE ONLY (RUO). MUST NOT TO BE USED IN DIAGNOSTIC OR THERAPEUTIC APPLICATIONS.

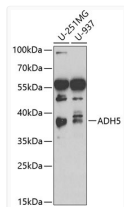


Immunofluorescence analysis of Hep G2 cells using ADH5/GSNOR Rabbit polyclonal antibody (STJ22518) at a dilution of 1:50 (40x lens). Secondary antibody: Cy3 Goat Anti-Rabbit IgG (H+L) at 1:500 dilution. Blue: DAPI for nuclear staining.

Immunofluorescence analysis of NIH/3T3 cells using ADH5/GSNOR Rabbit polyclonal antibody (STJ22518) at a dilution of 1:50 (40x lens). Secondary antibody: Cy3 Goat Anti-Rabbit IgG (H+L) at 1:500 dilution. Blue: DAPI for nuclear staining.

Immunofluorescence analysis of PC-12 cells using ADH5/GSNOR Rabbit polyclonal antibody (STJ22518) at a dilution of 1:50 (40x lens). Secondary antibody: Cy3 Goat Anti-Rabbit IgG (H+L) at 1:500 dilution. Blue: DAPI for nuclear staining.

Immunofluorescence analysis of SH-SY5Y cells using ADH5/GSNOR Rabbit polyclonal antibody (STJ22518) at a dilution of 1:50 (40x lens). Secondary antibody: () at 1:500 dilution. Blue: DAPI for nuclear staining.



Western blot analysis of various lysates using ADH5/GSNOR Rabbit polyclonal antibody (STJ22518) at 1:1000 dilution. Secondary antibody: HRP Goat Anti-Rabbit IgG (H+L) (STJS000856) at 1:10000 dilution. Lysates/proteins: 25 µg per lane. Blocking buffer: 3% nonfat dry milk in TBST.