

Anti-ABCC4 antibody (1067-1325) (STJ22460)

GENERAL INFORMATION

Product Type	Primary antibodies
Applications	WB/IHC-P/IF/ICC/ELISA
Host / Source	Rabbit
Reactivity	Human/Mouse/Rat

PRODUCT PROPERTIES

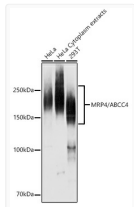
Clonality	Polyclonal
Concentration	Lot specific
Conjugation	Unconjugated
Purification	Affinity purification
Dilution Range	WB:1:500-1:1000 IHC-P:1:50-1:200 ELISA:Recommended starting concentration is 1 µg/mL. Please optimize the concentration based on your specific assay requirements.
Formulation	PBS with 0.02% Sodium Azide, 50% Glycerol, pH 7.3.
Isotype	IgG
Molecular Weight	Protein Mw: 150kDa Observed Mw: 140-200kDa
Storage Instruction	Store at -20°C for up to 1 year from the date of receipt, and avoid repeat freeze-thaw cycles.

TARGET INFORMATION

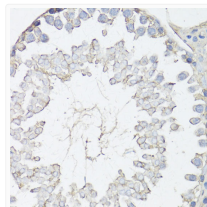
Gene ID	10257
Gene Symbol	ABCC4
UniProt ID	MRP4_HUMAN
Immunogen Region	1067-1325
Immunogen Sequence	SQEKVGVIGRTGAGKSSLIS ALFRLSEPEGKIWDKILTT EIGHLDLRKKMSIIPQEPVL FTGTMRKNLDPFNEHTDEEL WNALQEVQLKETIEDLPGKM DTELAESGNSNFSVQQRQLVC LARAILRKNQILIIDEATAN VDPRTDELIQKKIREKFAHC TVLTIAHRLNTIIDS KIMV LDSGRLKEYDEPYVLLQNKESLFYKMMVQQLGKAEAAAALTE TAKQVYFKRNYPHIGHTDH
Specificity	Recombinant fusion protein containing a sequence corresponding to amino acids 1067-1325 of human MRP4/ABCC4 (NP_005836.2).

ADDITIONAL INFORMATION

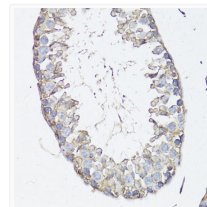
Note STRICTLY FOR FURTHER SCIENTIFIC RESEARCH USE ONLY (RUO). MUST NOT TO BE USED IN DIAGNOSTIC OR THERAPEUTIC APPLICATIONS.



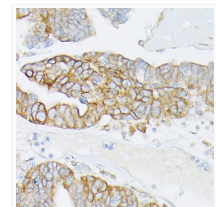
Western blot analysis of extracts of various cell lines, using MRP4/ABCC4 antibody (STJ22460) at 1:1000 dilution. Secondary antibody: HRP Goat Anti-rabbit IgG (H+L) (STJ5000856) at 1:10000 dilution. Lysates/proteins: 25 µg per lane. Blocking buffer: 3% non-fat dry milk in TBST. Detection: ECL Basic Kit. Exposure time: 10s.



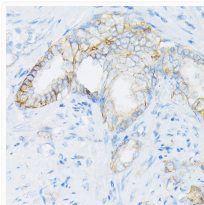
Immunohistochemistry analysis of paraffin-embedded rat testis using MRP4/ABCC4 antibody (STJ22460) at dilution of 1:150 (40x lens). Perform microwave antigen retrieval with 10 mM PBS buffer pH 7.2 before commencing with immunohistochemistry staining protocol.



Immunohistochemistry analysis of paraffin-embedded mouse testis using MRP4/ABCC4 antibody (STJ22460) at dilution of 1:150 (40x lens). Perform microwave antigen retrieval with 10 mM PBS buffer pH 7.2 before commencing with immunohistochemistry staining protocol.



Immunohistochemistry analysis of paraffin-embedded human oophoroma using MRP4/ABCC4 rabbit polyclonal antibody (STJ22460) at dilution of 1:50 (40x lens). Perform high pressure antigen retrieval with 10 mM citrate buffer pH 6.0 before commencing with immunohistochemistry staining protocol.



Immunohistochemistry analysis of paraffin-embedded human prostate cancer using MRP4/ABCC4 rabbit polyclonal antibody (STJ22460) at dilution of 1:50 (40x lens). Perform high pressure antigen retrieval with 10 mM citrate buffer pH 6.0 before commencing with immunohistochemistry staining protocol.