

## Anti-Phospho-SMC1A-S957 antibody (STJ22400)

### GENERAL INFORMATION

Product Type	Primary antibodies
Applications	WB/IHC-P/IP/ELISA
Host / Source	Rabbit
Reactivity	Human/Mouse/Rat

### PRODUCT PROPERTIES

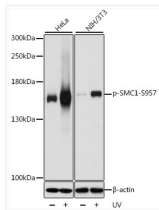
Clonality	Polyclonal
Concentration	Lot specific
Conjugation	Unconjugated
Purification	Affinity purification
Dilution Range	WB:1:500-1:2000 IHC-P:1:50-1:200 IP:0.5 Mu g-4 Mu g antibody for 200 Mu g-400 Mu g extracts of whole cells ELISA:Recommended starting concentration is 1 Mu g/mL. Please optimize the concentration based on your specific assay requirements.
Formulation	PBS with 0.02% Sodium Azide, 50% Glycerol, pH 7.3.
Isotype	IgG
Molecular Weight	Protein Mw: 143kDa Observed Mw: 160kDa
Storage Instruction	Store at -20°C for up to 1 year from the date of receipt, and avoid repeat freeze-thaw cycles.

### TARGET INFORMATION

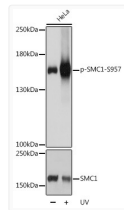
Gene ID	<a href="#">8243</a>
Gene Symbol	<a href="#">SMC1A</a>
UniProt ID	<a href="#">SMC1A_HUMAN</a>
Immunogen Sequence	GSSQG
Specificity	A synthetic phosphorylated peptide around S957 of human SMC1A (NP_006297.2).

### ADDITIONAL INFORMATION

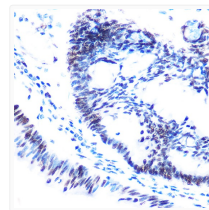
Note **STRICTLY FOR FURTHER SCIENTIFIC RESEARCH USE ONLY (RUO). MUST NOT TO BE USED IN DIAGNOSTIC OR THERAPEUTIC APPLICATIONS.**



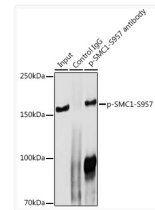
Western blot analysis of various lysates, using Phospho-SMC1-S957 Rabbit pAb (STJ22400) at 1:1000 dilution. HeLa and NIH/3T3 cells were treated by UV at room temperature for 15-30 minutes.  
 Secondary antibody: HRP Goat Anti-Rabbit IgG (H+L) (STJS000856) at 1:10000 dilution.  
 Lysates/proteins: 25 Mu g per lane.  
 Blocking buffer: 3% BSA.  
 Detection: ECL Basic Kit  
 Exposure time: 3s.



Western blot analysis of lysates from HeLa cells, using Phospho-SMC1-S957 Rabbit pAb (STJ22400) at 1:1000 dilution. HeLa cells were treated by UV at room temperature for 15-30 minutes.  
 Secondary antibody: HRP-conjugated Goat anti-Rabbit IgG (H+L) (STJS000856) at 1:10000 dilution.  
 Lysates/proteins: 25 Mu g per lane.  
 Blocking buffer: 3% BSA.  
 Detection: ECL Basic Kit  
 Exposure time: 3s.



Immunohistochemistry analysis of paraffin-embedded Human colon carcinoma using Phospho-SMC1-S957 Rabbit pAb (STJ22400) at dilution of 1:100 (40x lens). High pressure antigen retrieval performed with 0.01M Citrate Bufferr (pH 6.0) prior to immunohistochemistry staining.



Immunoprecipitation analysis of 300 Mu g extracts of HeLa cells using 3 Mu g Phospho-SMC1-S957 antibody (STJ22400). Western blot was performed from the immunoprecipitate using Phospho-SMC1-S957 antibody (STJ22400) at a dilution of 1:1000.