

Anti-Phospho-RELA-S536 antibody (STJ22377)

GENERAL INFORMATION

Product Type	Primary antibodies
Applications	WB/IF/ICC/ELISA
Host / Source	Rabbit
Reactivity	Human/Mouse/Rat

PRODUCT PROPERTIES

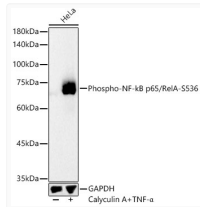
Clonality	Polyclonal
Concentration	Lot specific
Conjugation	Unconjugated
Purification	Affinity purification
Dilution Range	WB:1:2000-1:10000 IF/CC:1:50-1:200 ELISA:Recommended starting concentration is 1 µg/mL. Please optimize the concentration based on your specific assay requirements.
Formulation	PBS with 0.09% Sodium Azide, 50% Glycerol, pH7.3.
Isotype	IgG
Molecular Weight	Protein Mw: 60kDa Observed Mw: 65kDa/
Storage Instruction	Store at -20°C for up to 1 year from the date of receipt, and avoid repeat freeze-thaw cycles.

TARGET INFORMATION

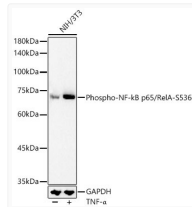
Gene ID	5970
Gene Symbol	RELA
UniProt ID	TF65_HUMAN
Immunogen Sequence	FSSIA
Specificity	A synthetic phosphorylated peptide around S536 of human RelA (NP_068810.3).

ADDITIONAL INFORMATION

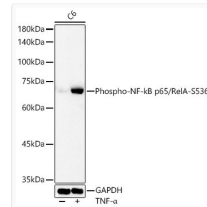
Note STRICTLY FOR FURTHER SCIENTIFIC RESEARCH USE ONLY (RUO). MUST NOT TO BE USED IN DIAGNOSTIC OR THERAPEUTIC APPLICATIONS.



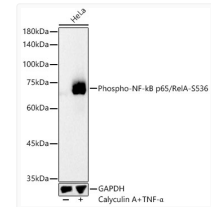
Western blot analysis of lysates from HeLa cells using Phospho-NF-kB p65/RelA-S536 Rabbit pAb (STJ22377) at 1:10000 dilution. HeLa cells were treated by TNF-Alpha (50 ng/ml) and Calyculin A (50 nM) at 37 °C for 10 minutes. Secondary antibody: HRP-conjugated Goat anti-Rabbit IgG (H+L) (STJS000856) at 1:10000 dilution. Lysates/proteins: 25 µg per lane. Blocking buffer: 3% nonfat dry milk in TBST. Detection: ECL Basic Kit Exposure time: 30s.



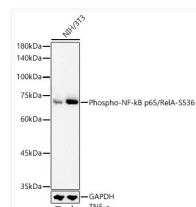
Western blot analysis of lysates from NIH/3T3 cells using Phospho-NF-kB p65/RelA-S536 Rabbit pAb (STJ22377) at 1:10000 dilution. NIH/3T3 cells were treated by TNF-Alpha (10 ng/ml) at 37 °C for 30 minutes. Secondary antibody: HRP-conjugated Goat anti-Rabbit IgG (H+L) (STJS000856) at 1:10000 dilution. Lysates/proteins: 25 µg per lane. Blocking buffer: 3% nonfat dry milk in TBST. Detection: ECL Basic Kit Exposure time: 90s.



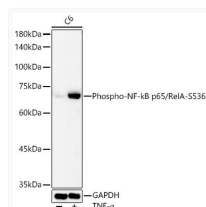
Western blot analysis of lysates from C6 cells using Phospho-NF-kB p65/RelA-S536 Rabbit pAb (STJ22377) at 1:10000 dilution. C6 cells were treated by TNF-Alpha (50 ng/ml) at 37 °C for 30 minutes. Secondary antibody: HRP-conjugated Goat anti-Rabbit IgG (H+L) (STJS000856) at 1:10000 dilution. Lysates/proteins: 25 µg per lane. Blocking buffer: 3% nonfat dry milk in TBST. Detection: ECL Basic Kit Exposure time: 90s.



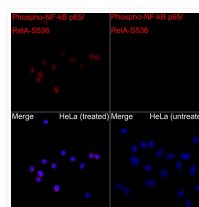
Western blot analysis of lysates from HeLa cells using Phospho-NF-kB p65/RelA-S536 Rabbit pAb (STJ22377) at 1:10000 dilution. HeLa cells were treated by TNF-α (50 ng/ml) and Calyculin A (50 nM) at 37C for 10 minutes. Secondary antibody: HRP-conjugated Goat anti-Rabbit IgG (H+L) (STJS000856) at 1:10000 dilution. Lysates/proteins: 25 µg per lane. Blocking buffer: 3% nonfat dry milk in TBST. Detection: ECL Basic Kit Exposure time: 30s.



Western blot analysis of lysates from NIH/3T3 cells using Phospho-NF-kB p65/RelA-S536 Rabbit pAb (STJ22377) at 1:10000 dilution. NIH/3T3 cells were treated by TNF-α (10 ng/ml) at 37C for 30 minutes. Secondary antibody: HRP-conjugated Goat anti-Rabbit IgG (H+L) (STJS000856) at 1:10000 dilution. Lysates/proteins: 25 µg per lane. Blocking buffer: 3% nonfat dry milk in TBST. Detection: ECL Basic Kit Exposure time: 90s.



Western blot analysis of lysates from C6 cells using Phospho-NF-kB p65/RelA-S536 Rabbit pAb (STJ22377) at 1:10000 dilution. C6 cells were treated by TNF-α (50 ng/ml) at 37C for 30 minutes. Secondary antibody: HRP-conjugated Goat anti-Rabbit IgG (H+L) (STJS000856) at 1:10000 dilution. Lysates/proteins: 25 µg per lane. Blocking buffer: 3% nonfat dry milk in TBST. Detection: ECL Basic Kit Exposure time: 90s.



Immunofluorescence analysis of HeLa TNF-α + CA and HeLa cells using Phospho-NF-kB p65/RelA-S536 Rabbit pAb (STJ22377) at dilution of 1:50 (40x lens). Secondary antibody: Cy3-conjugated Goat anti-Rabbit IgG (H+L) (STJS001166) at 1:500 dilution. Blue: DAPI for nuclear staining.