

Anti-Phospho-RAF1-S621 antibody (STJ22366)

GENERAL INFORMATION

Product Type	Primary antibodies
Applications	WB/IP/ELISA
Host / Source	Rabbit
Reactivity	Human

PRODUCT PROPERTIES

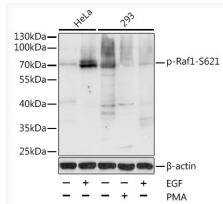
Clonality	Polyclonal
Concentration	Lot specific
Conjugation	Unconjugated
Purification	Affinity purification
Dilution Range	WB:1:500-1:2000 IP:0.5 Mu g-4 Mu g antibody for 200 Mu g extracts of whole cells ELISA:Recommended starting concentration is 1 Mu g/mL. Please optimize the concentration based on your specific assay requirements.
Formulation	PBS with 0.02% Sodium Azide, 50% Glycerol, pH 7.3.
Isotype	IgG
Molecular Weight	Protein Mw: 73kDa Observed Mw: 73kDa
Storage Instruction	Store at -20°C for up to 1 year from the date of receipt, and avoid repeat freeze-thaw cycles.

TARGET INFORMATION

Gene ID	5894
Gene Symbol	RAF1
UniProt ID	RAF1_HUMAN
Immunogen Sequence	SASEP
Specificity	A synthetic phosphorylated peptide around S621 of human Phospho-Raf1-S621 (NP_002871.1).

ADDITIONAL INFORMATION

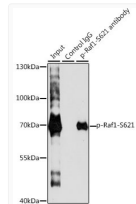
Note STRICTLY FOR FURTHER SCIENTIFIC RESEARCH USE ONLY (RUO). MUST NOT TO BE USED IN DIAGNOSTIC OR THERAPEUTIC APPLICATIONS.



Western blot analysis of lysates from HeLa and 293T cells, using Phospho-Raf1-S621 Rabbit pAb (STJ22366) at 1:1000 dilution. HeLa cells were treated by EGF (100ng/mL) for 30 minutes after serum-starvation overnight. 293T cells were treated by PMA/TPA (200nM) for 30 minutes or treated by EGF (25 Mu g/mL) for 30 minutes after serum-starvation overnight.

Secondary antibody: HRP-conjugated Goat anti-Rabbit IgG (H+L) (STJS000856) at 1:10000 dilution.

Lysates/proteins: 25 Mu g per lane.
Blocking buffer: 3% BSA.



Immunoprecipitation analysis of 200 Mu g extracts of HeLa cells, using 3 Mu g Phospho-Raf1-S621 pAb (STJ22366). Western blot was performed from the immunoprecipitate using Phospho-Raf1-S621 pAb (STJ22366) at a dilution of 1:1000. HeLa cells were treated by EGF (100 ng/mL) at 37 °C for 30 minutes after serum-starvation overnight.