

## Anti-Phospho-MAPT-S404 antibody (STJ22272)

### GENERAL INFORMATION

Product Type	Primary antibodies
Applications	WB/IHC-P/IF/ICC/ELISA
Host / Source	Rabbit
Reactivity	Human/Mouse/Rat

### PRODUCT PROPERTIES

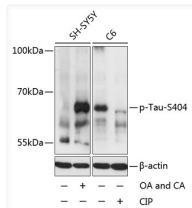
Clonality	Polyclonal
Concentration	Lot specific
Conjugation	Unconjugated
Purification	Affinity purification
Dilution Range	WB:1:500-1:2000 IHC-P:1:50-1:100 IF/CC:1:100-1:200 ELISA:Recommended starting concentration is 1 µg/mL. Please optimize the concentration based on your specific assay requirements.
Formulation	PBS with 0.01% Thimerosal, 50% Glycerol, pH 7.3.
Isotype	IgG
Molecular Weight	Protein Mw: 79kDa Observed Mw: 65kDa
Storage Instruction	Store at -20°C for up to 1 year from the date of receipt, and avoid repeat freeze-thaw cycles.

### TARGET INFORMATION

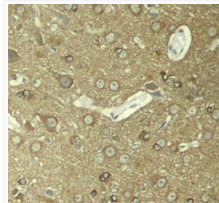
Gene ID	<a href="#">4137</a>
Gene Symbol	<a href="#">MAPT</a>
UniProt ID	<a href="#">TAU_HUMAN</a>
Immunogen Sequence	DTSPR
Specificity	A synthetic phosphorylated peptide around S404 of human Tau (NP_005901.2).

### ADDITIONAL INFORMATION

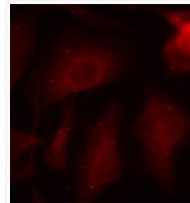
Note STRICTLY FOR FURTHER SCIENTIFIC RESEARCH USE ONLY (RUO). MUST NOT TO BE USED IN DIAGNOSTIC OR THERAPEUTIC APPLICATIONS.



Western blot analysis of lysates from SH-SY5Y and C6 cells, using Phospho-Tau-S404 Rabbit pAb (STJ22272) at 1:2000 dilution. SH-SY5Y cells were treated by Okadaic Acid (100nM) for 1 hour and Calyculin A (100nM) for 30 minutes after serum-starvation overnight. C6 cell lysates were treated by CIP at 37°C for 1 hour. Secondary antibody: HRP-conjugated Goat anti-Rabbit IgG (H+L) (STJS000856) at 1:10000 dilution. Lysates/proteins: 25 µg per lane. Blocking buffer: 3% BSA. Detection: ECL Basic Kit. Exposure time: 3s.



Immunohistochemistry analysis of paraffin-embedded Rat hippocampal region tissue from a model with Alzheimer, using Phospho-Tau-S404 Rabbit pAb (STJ22272). Microwave antigen retrieval performed with 0.01M Tris/EDTA Buffer (pH 9.0) prior to immunohistochemistry staining.



Immunofluorescence analysis of methanol-fixed HeLa cells using Phospho-Tau-S404 Rabbit pAb (STJ22272).