

Anti-Phospho-MAP3K5-S1033 antibody (STJ22248)

GENERAL INFORMATION

Product Type	Primary antibodies
Applications	WB/ELISA
Host / Source	Rabbit
Reactivity	Human

PRODUCT PROPERTIES

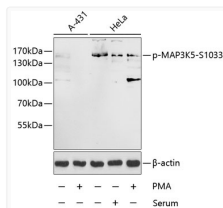
Clonality	Polyclonal
Concentration	Lot specific
Conjugation	Unconjugated
Purification	Affinity purification
Dilution Range	WB:1:500-1:2000 ELISA:Recommended starting concentration is 1 µg/mL. Please optimize the concentration based on your specific assay requirements.
Formulation	PBS with 0.02% Sodium Azide, 50% Glycerol, pH 7.3.
Isotype	IgG
Molecular Weight	Protein Mw: 155kDa Observed Mw: 155kDa
Storage Instruction	Store at -20°C for up to 1 year from the date of receipt, and avoid repeat freeze-thaw cycles.

TARGET INFORMATION

Gene ID	4217
Gene Symbol	MAP3K5
UniProt ID	M3K5_HUMAN
Immunogen Sequence	PPSPE
Specificity	A synthetic phosphorylated peptide around S1033 of human MAP3K5 (NP_005914.1).

ADDITIONAL INFORMATION

Note STRICTLY FOR FURTHER SCIENTIFIC RESEARCH USE ONLY (RUO). MUST NOT TO BE USED IN DIAGNOSTIC OR THERAPEUTIC APPLICATIONS.



Western blot analysis of lysates from A-431 and HeLa cells, using Phospho-MAP3K5-S1033 Rabbit pAb (STJ22248) at 1:1000 dilution. A431 cells were treated by PMA/TPA (200nM). HeLa cells were treated by 10% FBS or treated by PMA/TPA (200nM) for 15 minutes after serum-starvation overnight.

Secondary antibody: HRP-conjugated Goat anti-Rabbit IgG (H+L) (STJS000856) at 1:10000 dilution.

Lysates/proteins: 25 µg per lane.
Blocking buffer: 3% BSA.