

## Anti-Phospho-MAP2K3/MAP2K6-S189/S207 antibody (STJ22238)

### GENERAL INFORMATION

|               |                    |
|---------------|--------------------|
| Product Type  | Primary antibodies |
| Applications  | WB/ELISA           |
| Host / Source | Rabbit             |
| Reactivity    | Human/Mouse/Rat    |

### PRODUCT PROPERTIES

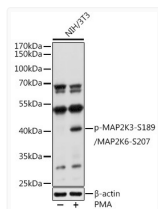
|                     |  |
|---------------------|--|
| Clonality           | Polyclonal   |
| Concentration       | Lot specific   |
| Conjugation         | Unconjugated   |
| Purification        | Affinity purification  |
| Dilution Range      | WB:1:500-1:1000<br>ELISA:Recommended starting concentration is 1 µg/mL. Please optimize the concentration based on your specific assay requirements. |
| Formulation         | PBS with 0.09% Sodium Azide, 50% Glycerol, pH 7.3.   |
| Isotype             | IgG  |
| Molecular Weight    | Protein Mw: 36kDa/39kDa/31kDa/37kDa<br>Observed Mw: 40kDa/41kDa  |
| Storage Instruction | Store at -20°C for up to 1 year from the date of receipt, and avoid repeat freeze-thaw cycles.   |

### TARGET INFORMATION

|                    |  |
|--------------------|--|
| Gene ID            | <a href="#">5606</a><br><a href="#">5608</a>   |
| Gene Symbol        | <a href="#">MAP2K3</a><br><a href="#">MAP2K6</a>                                     |
| UniProt ID         | <a href="#">MP2K3_HUMAN</a><br><a href="#">MP2K6_HUMAN</a>                           |
| Immunogen Sequence | VDSVA  |
| Specificity        | A synthetic phosphorylated peptide around S189 of human MAP2K6/MAP2K3 (NP_002747.2). |

### ADDITIONAL INFORMATION

Note STRICTLY FOR FURTHER SCIENTIFIC RESEARCH USE ONLY (RUO). MUST NOT TO BE USED IN DIAGNOSTIC OR THERAPEUTIC APPLICATIONS.



Western blot analysis of lysates from NIH/3T3 cells, using Phospho-MAP2K3-S189/MAP2K6-S207 Rabbit pAb (STJ22238) at 1:1000 dilution. NIH/3T3 cells were treated by PMA/TPA (200 nM) at 37 °C for 30 minutes after serum-starvation overnight.

Secondary antibody: HRP-conjugated Goat anti-Rabbit IgG (H+L) (STJS000856) at 1:10000 dilution.

Lysates/proteins: 25 µg per lane.

Blocking buffer: 3% nonfat dry milk in TBST.

Detection: ECL Basic Kit

Exposure time: 5s.