

Anti-Phospho-HSPB1-S82 antibody (STJ22179)

GENERAL INFORMATION

Product Type	Primary antibodies
Applications	WB/IHC-P/IP/ELISA
Host / Source	Rabbit
Reactivity	Human

PRODUCT PROPERTIES

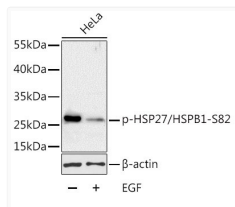
Clonality	Polyclonal
Concentration	Lot specific
Conjugation	Unconjugated
Purification	Affinity purification
Dilution Range	WB:1:500-1:2000 IHC-P:1:50-1:200 IP:0.5 Mu g-4 Mu g antibody for 200 Mu g-400 Mu g extracts of whole cells ELISA:Recommended starting concentration is 1 Mu g/mL. Please optimize the concentration based on your specific assay requirements.
Formulation	PBS with 0.09% Sodium Azide, 50% Glycerol, pH 7.3.
Isotype	IgG
Molecular Weight	Protein Mw: 23kDa Observed Mw: 28kDa
Storage Instruction	Store at -20°C for up to 1 year from the date of receipt, and avoid repeat freeze-thaw cycles.

TARGET INFORMATION

Gene ID	3315
Gene Symbol	HSPB1
UniProt ID	HSPB1_HUMAN
Immunogen Sequence	QLSSG
Specificity	A synthetic phosphorylated peptide around S82 of human HSP27/HSPB1 (NP_001531.1).

ADDITIONAL INFORMATION

Note **STRICTLY FOR FURTHER SCIENTIFIC RESEARCH USE ONLY (RUO). MUST NOT TO BE USED IN DIAGNOSTIC OR THERAPEUTIC APPLICATIONS.**



Western blot analysis of lysates from HeLa cells, using Phospho-HSP27/HSPB1-S82 Rabbit pAb (STJ22179) at 1:1000 dilution. HeLa cells were treated by EGF (100ng/mL) for 30 minutes after serum-starvation overnight.

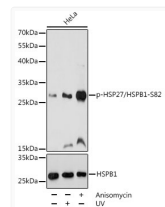
Secondary antibody: HRP-conjugated Goat anti-Rabbit IgG (H+L) (STJS000856) at 1:10000 dilution.

Lysates/proteins: 25 Mu g per lane.

Blocking buffer: 3% BSA.

Detection: ECL Basic Kit

Exposure time: 1min.



Western blot analysis of lysates from HeLa cells, using Phospho-HSP27/HSPB1-S82 pAb (STJ22179) at 1:1000 dilution or HSP27/HSPB1 antibody (STJ240462). HeLa cells were treated by UV at room temperature for 15-30 minutes. HeLa cells were treated by Anisomycin (25 Mu g/mL) at 37 °C for 30 minutes after serum-starvation overnight.

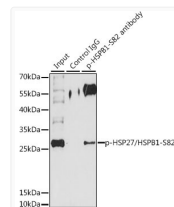
Secondary antibody: HRP-conjugated Goat anti-Rabbit IgG (H+L) (STJS000856) at 1:10000 dilution.

Lysates/proteins: 25 Mu g per lane.

Blocking buffer: 3% BSA.

Detection: ECL Basic Kit

Exposure time: 10s.



Immunoprecipitation analysis of 200 Mu g extracts of HeLa cells, using 3 Mu g Phospho-HSP27/HSPB1-S82 pAb (STJ22179). Western blot was performed from the immunoprecipitate using Phospho-HSP27/HSPB1-S82 pAb (STJ22179) at a dilution of 1:1000. HeLa cells were treated by EGF (100 ng/mL) at 37 °C for 30 minutes after serum-starvation overnight.