

Anti-Phospho-HDAC4/HDAC5/HDAC9-S246/S259/S220 antibody (STJ22166)

GENERAL INFORMATION

Product Type	Primary antibodies
Applications	WB/IHC-P/ELISA
Host / Source	Rabbit
Reactivity	Human/Mouse/Rat

PRODUCT PROPERTIES

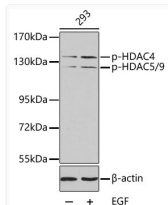
Clonality	Polyclonal
Concentration	Lot specific
Conjugation	Unconjugated
Purification	Affinity purification
Dilution Range	WB:1:500-1:1000 IHC-P:1:50-1:200 ELISA:Recommended starting concentration is 1 Mu g/mL. Please optimize the concentration based on your specific assay requirements.
Formulation	PBS with 0.05% Proclin300, 50% Glycerol, pH 7.3.
Isotype	IgG
Molecular Weight	Protein Mw: 57-65kDa/97-122kDa Observed Mw: 125kDa/140kDa
Storage Instruction	Store at -20°C for up to 1 year from the date of receipt, and avoid repeat freeze-thaw cycles.

TARGET INFORMATION

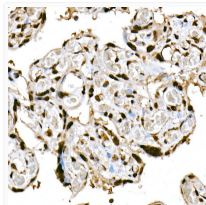
Gene ID	10014 9734 9759 HDAC5 HDAC9 HDAC5_HUMAN HDAC9_HUMAN HDAC4_HUMAN
Specificity	A phospho specific peptide corresponding to residues surrounding S246 of human HDAC4

ADDITIONAL INFORMATION

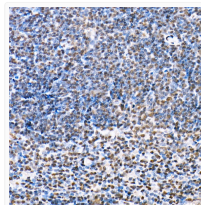
Note STRICTLY FOR FURTHER SCIENTIFIC RESEARCH USE ONLY (RUO). MUST NOT TO BE USED IN DIAGNOSTIC OR THERAPEUTIC APPLICATIONS.



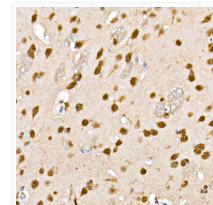
Western blot analysis of lysates from 293 cells, using Phospho-HDAC4-S246/HDAC5-S259/HDAC9-S220 Rabbit pAb (STJ22166). 293 cells were treated by EGF. Secondary antibody: HRP-conjugated Goat anti-Rabbit IgG (H+L) (STJS000856) at 1:10000 dilution. Lysates/proteins: 25 Mu g per lane. Blocking buffer: 3% BSA.



Immunohistochemistry analysis of paraffin-embedded Human placenta using Phospho-HDAC4-S246/HDAC5-S259/HDAC9-S220 Rabbit pAb (STJ22166) at dilution of 1:50 (40x lens). High pressure antigen retrieval performed with 0.01M Citrate Bufferr (pH 6.0) prior to immunohistochemistry staining.



Immunohistochemistry analysis of paraffin-embedded Mouse spleen using Phospho-HDAC4-S246/HDAC5-S259/HDAC9-S220 Rabbit pAb (STJ22166) at dilution of 1:50 (40x lens). High pressure antigen retrieval performed with 0.01M Citrate Bufferr (pH 6.0) prior to immunohistochemistry staining.



Immunohistochemistry analysis of paraffin-embedded Rat brain using Phospho-HDAC4-S246/HDAC5-S259/HDAC9-S220 Rabbit pAb (STJ22166) at dilution of 1:50 (40x lens). High pressure antigen retrieval performed with 0.01M Citrate Bufferr (pH 6.0) prior to immunohistochemistry staining.