

## Anti-Phospho-GRIN1-S896 antibody (STJ22157)

### GENERAL INFORMATION

|               |                    |
|---------------|--------------------|
| Product Type  | Primary antibodies |
| Applications  | WB/ELISA           |
| Host / Source | Rabbit             |
| Reactivity    | Human/Mouse/Rat    |

### PRODUCT PROPERTIES

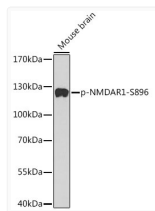
|                     |                                                                                                                                                      |
|---------------------|------------------------------------------------------------------------------------------------------------------------------------------------------|
| Clonality           | Polyclonal                                                                                                                                           |
| Concentration       | Lot specific                                                                                                                                         |
| Conjugation         | Unconjugated                                                                                                                                         |
| Purification        | Affinity purification                                                                                                                                |
| Dilution Range      | WB:1:500-1:2000<br>ELISA:Recommended starting concentration is 1 µg/mL. Please optimize the concentration based on your specific assay requirements. |
| Formulation         | PBS with 0.01% Thimerosal, 50% Glycerol, pH 7.3.                                                                                                     |
| Isotype             | IgG                                                                                                                                                  |
| Molecular Weight    | Protein Mw: 105kDa<br>Observed Mw: 120kDa                                                                                                            |
| Storage Instruction | Store at -20°C for up to 1 year from the date of receipt, and avoid repeat freeze-thaw cycles.                                                       |

### TARGET INFORMATION

|                    |                                                                               |
|--------------------|-------------------------------------------------------------------------------|
| Gene ID            | <a href="#">2902</a>                                                          |
| Gene Symbol        | <a href="#">GRIN1</a>                                                         |
| UniProt ID         | <a href="#">NMDZ1_HUMAN</a>                                                   |
| Immunogen Sequence | RRSSK                                                                         |
| Specificity        | A synthetic phosphorylated peptide around S896 of human NMDAR1 (NP_015566.1). |

### ADDITIONAL INFORMATION

Note **STRICTLY FOR FURTHER SCIENTIFIC RESEARCH USE ONLY (RUO). MUST NOT TO BE USED IN DIAGNOSTIC OR THERAPEUTIC APPLICATIONS.**



Western blot analysis of lysates from mouse Brain tissue, using Phospho-NMDAR1-S896 Rabbit pAb (STJ22157).

Secondary antibody: HRP-conjugated Goat anti-Rabbit IgG (H+L) (STJS000856) at 1:10000 dilution.

Lysates/proteins: 25 µg per lane.  
Blocking buffer: 3% BSA.