

## Anti-Phospho-ERBB3-Y1328 antibody (STJ22130)

### GENERAL INFORMATION

Product Type	Primary antibodies
Applications	WB/IF/ICC/ELISA
Host / Source	Rabbit
Reactivity	Human/Mouse/Rat

### PRODUCT PROPERTIES

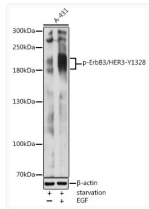
Clonality	Polyclonal
Concentration	Lot specific
Conjugation	Unconjugated
Purification	Affinity purification
Dilution Range	WB:1:1000-1:5000 IF/CC:1:100-1:200 ELISA:Recommended starting concentration is 1 Mu g/mL. Please optimize the concentration based on your specific assay requirements.
Formulation	PBS with 0.05% Proclin300, 50% Glycerol, pH 7.3.
Isotype	IgG
Molecular Weight	Protein Mw: 148kDa Observed Mw: 185kDa
Storage Instruction	Store at -20°C for up to 1 year from the date of receipt, and avoid repeat freeze-thaw cycles.

### TARGET INFORMATION

Gene ID	<a href="#">2065</a>
Gene Symbol	<a href="#">ERBB3</a>
UniProt ID	<a href="#">ERBB3_HUMAN</a>
Immunogen Sequence	PDYWH
Specificity	A synthetic phosphorylated peptide around Y1328 of human ERBB3 (NP_001973.2).

### ADDITIONAL INFORMATION

Note STRICTLY FOR FURTHER SCIENTIFIC RESEARCH USE ONLY (RUO). MUST NOT TO BE USED IN DIAGNOSTIC OR THERAPEUTIC APPLICATIONS.



Western blot analysis of lysates from A-431 cells, using Phospho-ErbB3/HER3-Y1328 Rabbit pAb (STJ22130) at 1:2000 dilution. A-431 cells were treated by EGF (100 ng/ml) at 37 °C for 30 minutes after serum-starvation overnight.

Secondary antibody: HRP-conjugated Goat anti-Rabbit IgG (H+L) (STJS000856) at 1:10000 dilution.

Lysates/proteins: 25 Mu g per lane.

Blocking buffer: 3% nonfat dry milk in TBST.

Detection: ECL Basic Kit

Exposure time: 5s.