

## Anti-Phospho-EIF4EBP1-T37/46 antibody (STJ22117)

### GENERAL INFORMATION

Product Type	Primary antibodies
Applications	WB/IHC-P/IF/ICC/ELISA
Host / Source	Rabbit
Reactivity	Human/Mouse/Rat

### PRODUCT PROPERTIES

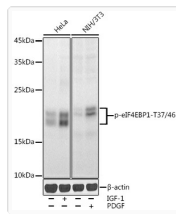
Clonality	Polyclonal
Concentration	Lot specific
Conjugation	Unconjugated
Purification	Affinity purification
Dilution Range	WB:1:500-1:1000 IHC-P:1:50-1:200 IF/CC:1:50-1:200 ELISA:Recommended starting concentration is 1 µg/mL. Please optimize the concentration based on your specific assay requirements.
Formulation	PBS with 0.02% Sodium Azide, 50% Glycerol, pH 7.3.
Isotype	IgG
Molecular Weight	Protein Mw: 13kDa Observed Mw: 15kDa-20kDa
Storage Instruction	Store at -20°C for up to 1 year from the date of receipt, and avoid repeat freeze-thaw cycles.

### TARGET INFORMATION

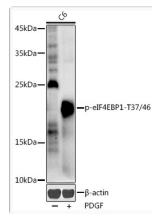
Gene ID	<a href="#">1978</a>
Gene Symbol	<a href="#">EIF4EBP1</a>
UniProt ID	<a href="#">4EBP1_HUMAN</a>
Immunogen Sequence	STTPGGTLFSTTPG
Specificity	A synthetic phosphorylated peptide around T37 & T46 of human eIF4EBP1 (NP_004086.1).

### ADDITIONAL INFORMATION

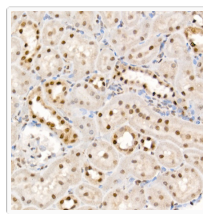
Note	STRICTLY FOR FURTHER SCIENTIFIC RESEARCH USE ONLY (RUO). MUST NOT TO BE USED IN DIAGNOSTIC OR THERAPEUTIC APPLICATIONS.
------	---



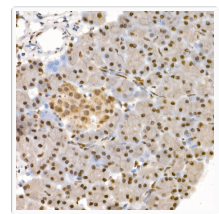
Western blot analysis of various lysates using Phospho-eIF4EBP1-T37/46 Rabbit pAb (STJ22117) at 1:1000 dilution. HeLa cells were treated by IGF-1 (50 ng/ml) at 37 °C for 30 minutes after serum-starvation overnight. NIH/3T3 cells were treated by PDGF (100 ng/ml) at 37 °C for 30 minutes after serum-starvation overnight. Secondary antibody: HRP-conjugated Goat anti-Rabbit IgG (H+L) (STJS000856) at 1:10000 dilution. Lysates/proteins: 25 Mu g per lane. Blocking buffer: 3% nonfat dry milk in TBST. Detection: ECL Enhanced Kit Exposure time: 30s.



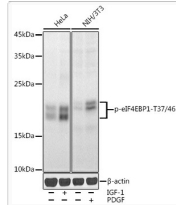
Western blot analysis of lysates from C6 cells, using Phospho-eIF4EBP1-T37/46 Rabbit pAb (STJ22117) at 1:1000 dilution. C6 cells were treated by PDGF (100 ng/ml) at 37 °C for 30 minutes after serum-starvation overnight. Secondary antibody: HRP-conjugated Goat anti-Rabbit IgG (H+L) (STJS000856) at 1:10000 dilution. Lysates/proteins: 25 Mu g per lane. Blocking buffer: 3% nonfat dry milk in TBST. Detection: ECL Enhanced Kit Exposure time: 180s.



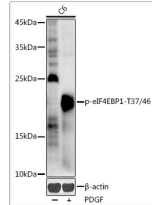
Immunohistochemistry analysis of paraffin-embedded Rat kidney using Phospho-eIF4EBP1-T37/46 Rabbit pAb (STJ22117) at dilution of 1:100 (40x lens). High pressure antigen retrieval performed with 0.01M Citrate Buffer (pH 6.0) prior to immunohistochemistry staining.



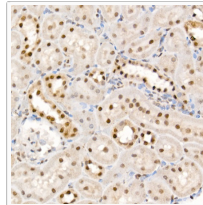
Immunohistochemistry analysis of paraffin-embedded Rat pancreas using Phospho-eIF4EBP1-T37/46 Rabbit pAb (STJ22117) at dilution of 1:100 (40x lens). High pressure antigen retrieval performed with 0.01M Citrate Buffer (pH 6.0) prior to immunohistochemistry staining.



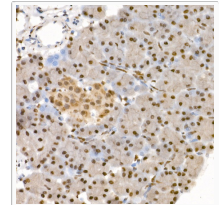
Western blot analysis of various lysates using Phospho-eIF4EBP1-T37/46 Rabbit pAb (STJ22117) at 1:1000 dilution. HeLa cells were treated by IGF-1 (50 ng/ml) at 37C for 30 minutes after serum-starvation overnight. NIH/3T3 cells were treated by PDGF (100 ng/ml) at 37C for 30 minutes after serum-starvation overnight. Secondary antibody: HRP-conjugated Goat anti-Rabbit IgG (H+L) (STJS000856) at 1:10000 dilution. Lysates/proteins: 25 Mu g per lane. Blocking buffer: 3% nonfat dry milk in TBST. Detection: ECL Enhanced Kit Exposure time: 30s.



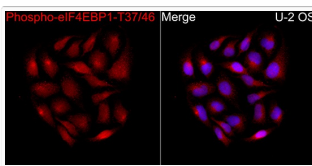
Western blot analysis of lysates from C6 cells, using Phospho-eIF4EBP1-T37/46 Rabbit pAb (STJ22117) at 1:1000 dilution. C6 cells were treated by PDGF (100 ng/ml) at 37C for 30 minutes after serum-starvation overnight. Secondary antibody: HRP-conjugated Goat anti-Rabbit IgG (H+L) (STJS000856) at 1:10000 dilution. Lysates/proteins: 25 Mu g per lane. Blocking buffer: 3% nonfat dry milk in TBST. Detection: ECL Enhanced Kit Exposure time: 180s.



Immunohistochemistry analysis of paraffin-embedded Rat kidney using Phospho-eIF4EBP1-T37/46 Rabbit pAb (STJ22117) at dilution of 1:100 (40x lens). High pressure antigen retrieval performed with 0.01M Citrate Buffer (pH 6.0) prior to immunohistochemistry staining.



Immunohistochemistry analysis of paraffin-embedded Rat pancreas using Phospho-eIF4EBP1-T37/46 Rabbit pAb (STJ22117) at dilution of 1:100 (40x lens). High pressure antigen retrieval performed with 0.01M Citrate Buffer (pH 6.0) prior to immunohistochemistry staining.



Immunofluorescence analysis of U-2 OS cells using Phospho-eIF4EBP1-T37/46 Rabbit pAb (STJ22117) at dilution of 1:100 (40x lens). Secondary antibody: Cy3 Goat Anti-Rabbit IgG (H+L) (STJS001166) at 1:500 dilution. Blue: DAPI for nuclear staining.