

## Anti-Phospho-ATF2-T71 antibody (STJ22025)

### GENERAL INFORMATION

Product Type	Primary antibodies
Applications	WB/IHC-P/ELISA
Host / Source	Rabbit
Reactivity	Human/Mouse/Rat

### PRODUCT PROPERTIES

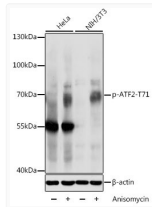
Clonality	Polyclonal
Concentration	Lot specific
Conjugation	Unconjugated
Purification	Affinity purification
Dilution Range	WB:1:500-1:1000 IHC-P:1:50-1:100 ELISA:Recommended starting concentration is 1 Mu g/mL. Please optimize the concentration based on your specific assay requirements.
Formulation	PBS with 0.02% Sodium Azide, 50% Glycerol, pH 7.3.
Isotype	IgG
Molecular Weight	Protein Mw: 55kDa Observed Mw: 70kDa
Storage Instruction	Store at -20°C for up to 1 year from the date of receipt, and avoid repeat freeze-thaw cycles.

### TARGET INFORMATION

Gene ID	<a href="#">1386</a>
Gene Symbol	<a href="#">ATF2</a>
UniProt ID	<a href="#">ATF2_HUMAN</a>
Immunogen Sequence	TPTPT
Specificity	A synthetic phosphorylated peptide around T71 of human ATF2 (NP_001871.2).

### ADDITIONAL INFORMATION

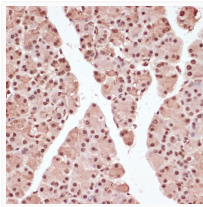
Note **STRICTLY FOR FURTHER SCIENTIFIC RESEARCH USE ONLY (RUO). MUST NOT TO BE USED IN DIAGNOSTIC OR THERAPEUTIC APPLICATIONS.**



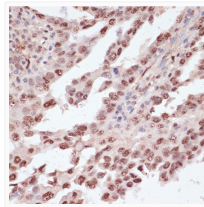
Western blot analysis of various lysates using Phospho-ATF2-T71 Rabbit pAb (STJ22025) at 1:1000 dilution. HeLa cells were treated by Anisomycin (25 Mu g/mL) for 30 minutes after serum-starvation overnight. NIH/3T3 cells were treated by Anisomycin (25 Mu g/mL) for 30 minutes.

Secondary antibody: HRP-conjugated Goat anti-Rabbit IgG (H+L) (STJS000856) at 1:10000 dilution.

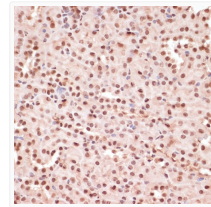
Lysates/proteins: 25 Mu g per lane.  
 Blocking buffer: 3% BSA.  
 Detection: ECL Basic Kit  
 Exposure time: 10s.



Immunohistochemistry analysis of paraffin-embedded Rat pancreas using Phospho-ATF2-T71 Rabbit pAb (STJ22025) at dilution of 1:100 (40x lens). Microwave antigen retrieval performed with 0.01M Tris/EDTA Buffer (pH 9.0) prior to immunohistochemistry staining.



Immunohistochemistry analysis of paraffin-embedded Human lung cancer using Phospho-ATF2-T71 Rabbit pAb (STJ22025) at dilution of 1:100 (40x lens). Microwave antigen retrieval performed with 0.01M Tris/EDTA Buffer (pH 9.0) prior to immunohistochemistry staining.



Immunohistochemistry analysis of paraffin-embedded Mouse kidney using Phospho-ATF2-T71 Rabbit pAb (STJ22025) at dilution of 1:100 (40x lens). Microwave antigen retrieval performed with 0.01M Tris/EDTA Buffer (pH 9.0) prior to immunohistochemistry staining.