

Anti-Phospho-AKT1-S473 antibody (STJ22011)

GENERAL INFORMATION

Product Type	Primary antibodies
Applications	WB/IHC-P/ELISA
Host / Source	Rabbit
Reactivity	Human/Mouse/Rat

PRODUCT PROPERTIES

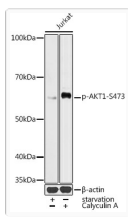
Clonality	Polyclonal
Concentration	Lot specific
Conjugation	Unconjugated
Purification	Affinity purification
Dilution Range	WB:1:500-1:1000 IHC-P:1:50-1:200 ELISA:Recommended starting concentration is 1 µg/mL. Please optimize the concentration based on your specific assay requirements.
Formulation	PBS with 0.09% Sodium Azide, 50% Glycerol, pH7.3.
Isotype	IgG
Molecular Weight	Protein Mw: 56kDa Observed Mw: 60kDa
Storage Instruction	Store at -20°C for up to 1 year from the date of receipt, and avoid repeat freeze-thaw cycles.

TARGET INFORMATION

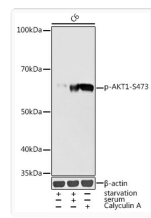
Gene ID	207
Gene Symbol	AKT1
UniProt ID	AKT1_HUMAN
Immunogen Sequence	QFSYS
Specificity	A synthetic phosphorylated peptide around S473 of human Akt1 (NP_005154.2).

ADDITIONAL INFORMATION

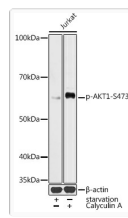
Note	STRICTLY FOR FURTHER SCIENTIFIC RESEARCH USE ONLY (RUO). MUST NOT TO BE USED IN DIAGNOSTIC OR THERAPEUTIC APPLICATIONS.
------	---



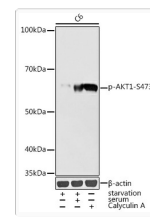
Western blot analysis of lysates from Jurka cells, using Phospho-AKT1-S473 Rabbit pAb (STJ22011) at 1:1000 dilution. Jurkat cells were treated by Serum-starvation overnight at 37 °C. Jurkat cells were treated by Calyculin A (100 nM) at 37 °C for 30 minutes after serum-starvation overnight.
 Secondary antibody: HRP-conjugated Goat anti-Rabbit IgG (H+L) (STJS000856) at 1:10000 dilution.
 Lysates/proteins: 25 Mu g per lane.
 Blocking buffer: 3% nonfat dry milk in TBST.
 Detection: ECL Basic Kit
 Exposure time: 1s.



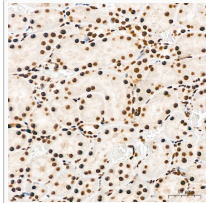
Western blot analysis of lysates from C6 cells, using Phospho-AKT1-S473 Rabbit pAb (STJ22011) at 1:1000 dilution. C6 cells were treated by Serum-starvation overnight at 37 °C. C6 cells were treated by Calyculin A (100 nM) at 37 °C for 30 minutes after serum-starvation overnight.
 Secondary antibody: HRP-conjugated Goat anti-Rabbit IgG (H+L) (STJS000856) at 1:10000 dilution.
 Lysates/proteins: 25 Mu g per lane.
 Blocking buffer: 3% nonfat dry milk in TBST.
 Detection: ECL Enhanced Kit
 Exposure time: 10s.



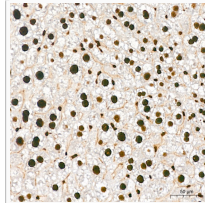
Western blot analysis of lysates from Jurka cells, using Phospho-AKT1-S473 Rabbit pAb (STJ22011) at 1:1000 dilution. Jurkat cells were treated by Serum-starvation overnight at 37C. Jurkat cells were treated by Calyculin A (100 nM) at 37C for 30 minutes after serum-starvation overnight.
 Secondary antibody: HRP-conjugated Goat anti-Rabbit IgG (H+L) (STJS000856) at 1:10000 dilution.
 Lysates/proteins: 25 Mu g per lane.
 Blocking buffer: 3% nonfat dry milk in TBST.
 Detection: ECL Basic Kit
 Exposure time: 1s.



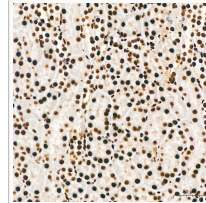
Western blot analysis of lysates from C6 cells, using Phospho-AKT1-S473 Rabbit pAb (STJ22011) at 1:1000 dilution. C6 cells were treated by Serum-starvation overnight at 37C. C6 cells were treated by Calyculin A (100 nM) at 37C for 30 minutes after serum-starvation overnight.
 Secondary antibody: HRP-conjugated Goat anti-Rabbit IgG (H+L) (STJS000856) at 1:10000 dilution.
 Lysates/proteins: 25 Mu g per lane.
 Blocking buffer: 3% nonfat dry milk in TBST.
 Detection: ECL Enhanced Kit
 Exposure time: 10s.



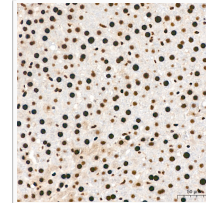
Immunohistochemistry analysis of paraffin-embedded Rat kidney tissue using Phospho-AKT1-S473 Rabbit pAb (STJ22011) at a dilution of 1:200 (40x lens). High pressure antigen retrieval performed with 0. 01M Citrate Buffer (pH 6. 0) prior to immunohistochemistry staining.



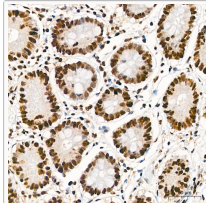
Immunohistochemistry analysis of paraffin-embedded Mouse liver tissue using Phospho-AKT1-S473 Rabbit pAb (STJ22011) at a dilution of 1:200 (40x lens). High pressure antigen retrieval performed with 0. 01M Citrate Buffer (pH 6. 0) prior to immunohistochemistry staining.



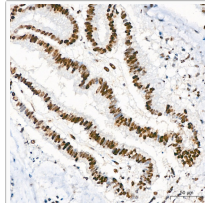
Immunohistochemistry analysis of paraffin-embedded Mouse kidney tissue using Phospho-AKT1-S473 Rabbit pAb (STJ22011) at a dilution of 1:200 (40x lens). High pressure antigen retrieval performed with 0. 01M Citrate Buffer (pH 6. 0) prior to immunohistochemistry staining.



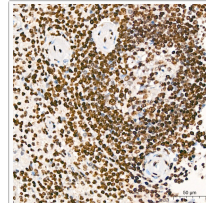
Immunohistochemistry analysis of paraffin-embedded Rat liver tissue using Phospho-AKT1-S473 Rabbit pAb (STJ22011) at a dilution of 1:200 (40x lens). High pressure antigen retrieval performed with 0. 01M Citrate Buffer (pH 6. 0) prior to immunohistochemistry staining.



Immunohistochemistry analysis of paraffin-embedded Human colon tissue using Phospho-AKT1-S473 Rabbit pAb (STJ22011) at a dilution of 1:200 (40x lens). High pressure antigen retrieval performed with 0. 01M Citrate Buffer (pH 6. 0) prior to immunohistochemistry staining.



Immunohistochemistry analysis of paraffin-embedded Human colon carcinoma tissue using Phospho-AKT1-S473 Rabbit pAb (STJ22011) at a dilution of 1:200 (40x lens). High pressure antigen retrieval performed with 0. 01M Citrate Buffer (pH 6. 0) prior to immunohistochemistry staining.



Immunohistochemistry analysis of paraffin-embedded Human spleen tissue using Phospho-AKT1-S473 Rabbit pAb (STJ22011) at a dilution of 1:200 (40x lens). High pressure antigen retrieval performed with 0. 01M Citrate Buffer (pH 6. 0) prior to immunohistochemistry staining.