

Anti-Bombesin Receptor 2 antibody (STJ197426)

GENERAL INFORMATION

Product Type	Primary antibodies
Applications	WB/IHC/IF
Host / Source	Rabbit
Reactivity	Rat/Mouse

PRODUCT PROPERTIES

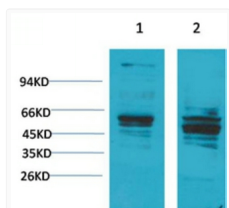
Clonality	Polyclonal
Concentration	1 mg/mL
Conjugation	Unconjugated
Purification	The antibody was affinity-purified from rabbit antiserum by affinity-chromatography using epitope-specific immunogen.
Dilution Range	WB 1:500-1:2000 IHC 1:100-1:300 ELISA 1:40000 IF 1:50-200
Formulation	Liquid in PBS containing 50% Glycerol, 0.5% BSA and 0.02% Sodium Azide.
Isotype	IgG
Molecular Weight	Observed: 50-70kD
Storage Instruction	Store at -20°C for up to 1 year from the date of receipt, and avoid repeat freeze-thaw cycles.

TARGET INFORMATION

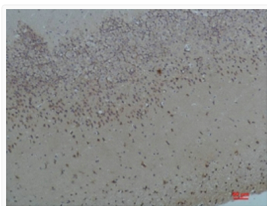
Gene ID	2925
Gene Symbol	GRPR
UniProt ID	GRPR_HUMAN
Specificity	The antibody detects endogenous Bombesin Receptor 2 protein

ADDITIONAL INFORMATION

Note STRICTLY FOR FURTHER SCIENTIFIC RESEARCH USE ONLY (RUO). MUST NOT TO BE USED IN DIAGNOSTIC OR THERAPEUTIC APPLICATIONS.



Western blot analysis of 1) Mouse Brain Tissue, 2) Rat Brain Tissue with Bombesin Receptor 2 Rabbit pAb diluted at 1:2,000.



Immunohistochemical analysis of paraffin-embedded Rat Brain Tissue using Bombesin Receptor 2 Rabbit pAb diluted at 1:200.