

Anti-KCNV2 antibody (STJ197358)

GENERAL INFORMATION

Product Type	Primary antibodies
Applications	WB/IHC/IF
Host / Source	Rabbit
Reactivity	Rat/Mouse

PRODUCT PROPERTIES

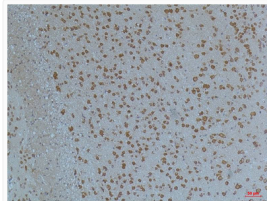
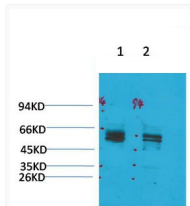
Clonality	Polyclonal
Concentration	1 mg/mL
Conjugation	Unconjugated
Purification	The antibody was affinity-purified from rabbit antiserum by affinity-chromatography using epitope-specific immunogen.
Dilution Range	WB 1:1000-2000 IHC 1:100-200 IF 1:50-200
Formulation	Liquid in PBS containing 50% Glycerol, 0.5% BSA and 0.02% Sodium Azide.
Isotype	IgG
Molecular Weight	Observed: 62kD
Storage Instruction	Store at -20°C for up to 1 year from the date of receipt, and avoid repeat freeze-thaw cycles.

TARGET INFORMATION

Gene ID	169522
Gene Symbol	KCNV2
UniProt ID	KCNV2_HUMAN
Specificity	Kv11.1 protein (A262) detects endogenous levels of Kv11.1

ADDITIONAL INFORMATION

Note **STRICTLY FOR FURTHER SCIENTIFIC RESEARCH USE ONLY (RUO). MUST NOT TO BE USED IN DIAGNOSTIC OR THERAPEUTIC APPLICATIONS.**



Western blot analysis of 1) Rat Brain Tissue, 2) Mouse Brain Tissue with KV11. 1 Rabbit pAb diluted at 1:2,000.

Immunohistochemical analysis of paraffin-embedded mouse BrainTissue using Kv11. 1 Rabbit pAb diluted at 1:200.