

Anti-KCNAB1 antibody (66-116 aa) (STJ197356)

GENERAL INFORMATION

Product Type	Primary antibodies
Applications	IHC/IF
Host / Source	Rabbit
Reactivity	Human/Rat/Mouse

PRODUCT PROPERTIES

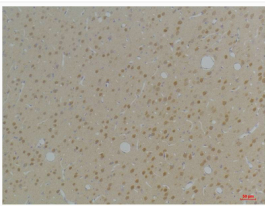
Clonality	Polyclonal
Concentration	1 mg/mL
Conjugation	Unconjugated
Purification	The antibody was affinity-purified from rabbit antiserum by affinity-chromatography using epitope-specific immunogen.
Dilution Range	IHC 1:100-200 IF 1:50-200
Formulation	Liquid in PBS containing 50% Glycerol, 0.5% BSA and 0.02% Sodium Azide.
Isotype	IgG
Molecular Weight	Observed: 50kD
Storage Instruction	Store at -20°C for up to 1 year from the date of receipt, and avoid repeat freeze-thaw cycles.

TARGET INFORMATION

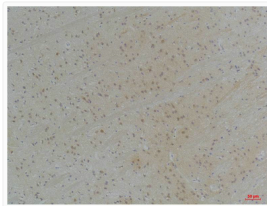
Gene ID	7881
Gene Symbol	KCNAB1
UniProt ID	KCAB1_HUMAN
Immunogen Region	66-116 aa
Specificity	KV Beta 1 protein (A255) detects endogenous levels of KV Beta 1

ADDITIONAL INFORMATION

Note **STRICTLY FOR FURTHER SCIENTIFIC RESEARCH USE ONLY (RUO). MUST NOT TO BE USED IN DIAGNOSTIC OR THERAPEUTIC APPLICATIONS.**



Immunohistochemical analysis of paraffin-embedded Rat BrainTissue using Kvb1 Rabbit pAb diluted at 1:200.



Immunohistochemical analysis of paraffin-embedded mouse BrainTissue using Kvb1 Rabbit pAb diluted at 1:200.