

Anti-Myc-Tag antibody (STJ197346)

GENERAL INFORMATION

Product Type	Primary antibodies
Applications	WB/ELISA/IP
Host / Source	Rabbit
Reactivity	Species independent

PRODUCT PROPERTIES

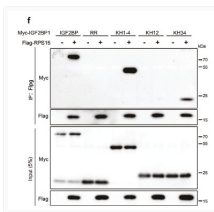
Clonality	Polyclonal
Conjugation	Unconjugated
Purification	The antibody was affinity-purified from rabbit antiserum by affinity-chromatography using epitope-specific immunogen.
Dilution Range	WB 1:5000 IP 1:200 ELISA 1:5000-20000
Formulation	Liquid in PBS pH7.4, 0.5% BSA, 0.02% Sodium Azide and 50% Glycerol.
Isotype	IgG
Storage Instruction	Store at -20°C for up to 1 year from the date of receipt, and avoid repeat freeze-thaw cycles.

TARGET INFORMATION

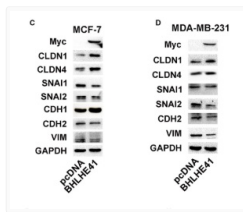
Specificity	The antibody detects C-Myc fusion proteins.
-------------	---

ADDITIONAL INFORMATION

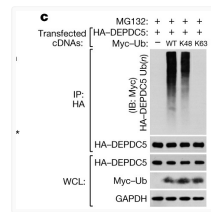
Note STRICTLY FOR FURTHER SCIENTIFIC RESEARCH USE ONLY (RUO). MUST NOT TO BE USED IN DIAGNOSTIC OR THERAPEUTIC APPLICATIONS.



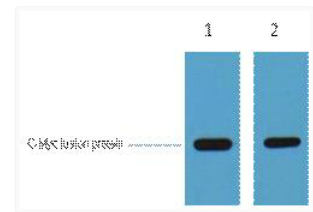
RPS15 interacted with IGF2BP1 to promote esophageal squamous cell carcinoma development via recognizing m6A modification. Zhihua Liu WB, IP Human 1:5000 HEK 293 T cell, KYSE30 cell, KYSE450 cell



Zhang, Di, et al. "BHLHE41 suppresses MCF-7 cell invasion via MAPK/JNK pathway." Journal of cellular and molecular medicine 24. 7 (2020) : 4001-4010.



Chen, Jie, et al. "KLHL22 activates amino-acid-dependent mTORC1 signalling to promote tumorigenesis and ageing." Nature (2018)



1ug C-Myc fusion protein+ primary antibody dilution at 1) 1:5000 2) 1:20000. Secondary antibody (STJ99666) was diluted at 1:20000