

Anti-SLC12A4 antibody (658-708 aa) (STJ197335)

GENERAL INFORMATION

| | |
|---------------|--------------------|
| Product Type | Primary antibodies |
| Applications | WB/IHC/IF |
| Host / Source | Rabbit |
| Reactivity | Human/Rat/Mouse |

PRODUCT PROPERTIES

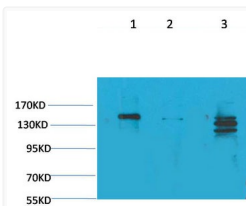
| | |
|---------------------|---|
| Clonality | Polyclonal |
| Concentration | 1 mg/mL |
| Conjugation | Unconjugated |
| Purification | The antibody was affinity-purified from rabbit antiserum by affinity-chromatography using epitope-specific immunogen. |
| Dilution Range | WB 1:1000-2000 IHC 1:100-200 IF 1:50-200 |
| Formulation | Liquid in PBS containing 50% Glycerol, 0.5% BSA and 0.02% Sodium Azide. |
| Isotype | IgG |
| Molecular Weight | Observed: 150kD |
| Storage Instruction | Store at -20°C for up to 1 year from the date of receipt, and avoid repeat freeze-thaw cycles. |

TARGET INFORMATION

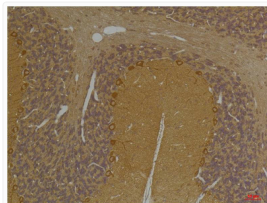
| | |
|------------------|---|
| Gene ID | 6560 |
| Gene Symbol | SLC12A4 |
| UniProt ID | S12A4_HUMAN |
| Immunogen Region | 658-708 aa |
| Specificity | SLC12A4 protein (A248) detects endogenous levels of SLC12A4 |

ADDITIONAL INFORMATION

Note STRICTLY FOR FURTHER SCIENTIFIC RESEARCH USE ONLY (RUO). MUST NOT TO BE USED IN DIAGNOSTIC OR THERAPEUTIC APPLICATIONS.



Western blot analysis of 1) Rat Brain Tissue, 2) Mouse Brain Tissue, 3) Hela with SLC12A4 Rabbit pAb diluted at 1:2,000.



Immunohistochemical analysis of paraffin-embedded Rat Brain Tissue using SLC12A4 Rabbit pAb diluted at 1:200.



Immunohistochemical analysis of paraffin-embedded mouse Brain Tissue using SLC12A4 Rabbit pAb diluted at 1:200.