

## Anti-VEGFA antibody (STJ197324)

### GENERAL INFORMATION

Product Type	Primary antibodies
Applications	IF/WB/IHC/ELISA
Host / Source	Rabbit
Reactivity	Human/Rat/Mouse

### PRODUCT PROPERTIES

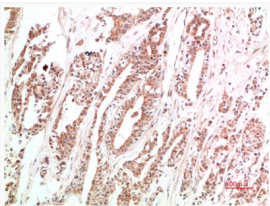
Clonality	Polyclonal
Concentration	1 mg/mL
Conjugation	Unconjugated
Purification	The antibody was affinity-purified from rabbit antiserum by affinity-chromatography using epitope-specific immunogen.
Dilution Range	IF 1:50-200 WB 1:500-2000 IHC 1:50-300 IHC 1:50-300
Formulation	Liquid in PBS containing 50% Glycerol, 0.5% BSA and 0.02% Sodium Azide.
Isotype	IgG
Molecular Weight	Observed: 21kD (monomer) , 42kD (dimer)
Storage Instruction	Store at -20°C for up to 1 year from the date of receipt, and avoid repeat freeze-thaw cycles.

### TARGET INFORMATION

Gene ID	<a href="#">7422</a>
Gene Symbol	<a href="#">VEGFA</a>
UniProt ID	<a href="#">VEGFA_HUMAN</a>
Specificity	VEGF protein detects endogenous levels of VEGFA

### ADDITIONAL INFORMATION

Note STRICTLY FOR FURTHER SCIENTIFIC RESEARCH USE ONLY (RUO). MUST NOT TO BE USED IN DIAGNOSTIC OR THERAPEUTIC APPLICATIONS.



Immunohistochemical analysis of paraffin-embedded Human Stomach Carcinoma Tissue using VEGF Rabbit pAb diluted at 1:500.