

Anti-Alpha Tubulin antibody (STJ197321)

GENERAL INFORMATION

Product Type	Primary antibodies
Applications	WB
Host / Source	Rabbit
Reactivity	Human/Mouse/Rat

PRODUCT PROPERTIES

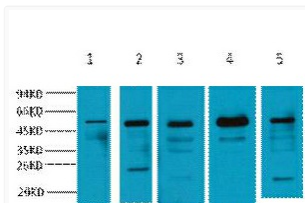
Clonality	Polyclonal
Conjugation	Unconjugated
Purification	The antibody was affinity-purified from rabbit antiserum by affinity-chromatography using epitope-specific immunogen.
Dilution Range	WB 1:2000
Formulation	Liquid in PBS pH7.4, 0.5% BSA, 0.02% Sodium Azide and 50% Glycerol.
Isotype	IgG
Molecular Weight	Observed: 52kD
Storage Instruction	Store at -20°C for up to 1 year from the date of receipt, and avoid repeat freeze-thaw cycles.

TARGET INFORMATION

Gene ID	7846 10376
Gene Symbol	TUBA1A TUBA1B
UniProt ID	TBA1A_HUMAN TBA1B_HUMAN
Specificity	The antibody detects endogenous Alpha-tubulin protein.

ADDITIONAL INFORMATION

Note STRICTLY FOR FURTHER SCIENTIFIC RESEARCH USE ONLY (RUO). MUST NOT TO BE USED IN DIAGNOSTIC OR THERAPEUTIC APPLICATIONS.



Western blot analysis of 1) Mouse skeletal muscle tissue, 2) Mouse kidney tissue, 3) Mouse Heart Tissue, 4) Mouse brain tissue, 5) Mouse Liver tissue, diluted at 1:2000. Secondary antibody (STJ99666) was diluted at 1:20000