

Anti-TUBB2A antibody (80-130 aa) (STJ197320)

GENERAL INFORMATION

Product Type	Primary antibodies
Applications	WB/IF
Host / Source	Rabbit
Reactivity	Human/Mouse/Rat

PRODUCT PROPERTIES

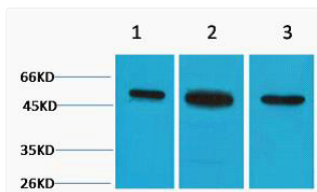
Clonality	Polyclonal
Conjugation	Unconjugated
Purification	The antibody was affinity-purified from rabbit antiserum by affinity-chromatography using epitope-specific immunogen.
Dilution Range	WB 1:500-2000 IF ICC 1:100-500
Formulation	Liquid in PBS pH7.4, 0.5% BSA, 0.02% Sodium Azide and 50% Glycerol.
Isotype	IgG
Molecular Weight	Observed: 50kD
Storage Instruction	Store at -20°C for up to 1 year from the date of receipt, and avoid repeat freeze-thaw cycles.

TARGET INFORMATION

Gene ID	7280
Gene Symbol	TUBB2A
UniProt ID	TBB2A_HUMAN
Immunogen Region	80-130 aa
Specificity	The antibody detects endogenous Beta II tubulin protein.

ADDITIONAL INFORMATION

Note STRICTLY FOR FURTHER SCIENTIFIC RESEARCH USE ONLY (RUO). MUST NOT TO BE USED IN DIAGNOSTIC OR THERAPEUTIC APPLICATIONS.



Western blot analysis of 1) HeLa, 2) 3T3, 3) Rat Kidney tissue, diluted at 1:3000. Secondary antibody (STJ99666) was diluted at 1:20000