

Anti-Di-Methyl-Histone H2B-Lys5 antibody (STJ197299)

GENERAL INFORMATION

| | |
|---------------|--------------------|
| Product Type | Primary antibodies |
| Applications | WB |
| Host / Source | Rabbit |
| Reactivity | Human/Mouse/Rat |

PRODUCT PROPERTIES

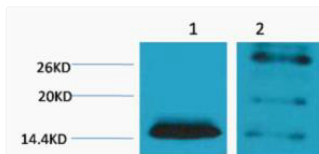
| | |
|---------------------|---|
| Clonality | Polyclonal |
| Conjugation | Unconjugated |
| Purification | The antibody was affinity-purified from rabbit antiserum by affinity-chromatography using specific immunogen. |
| Dilution Range | WB 1:500-1000 |
| Formulation | Liquid in PBS pH7.4, 0.5% BSA, 0.02% Sodium Azide and 50% Glycerol. |
| Isotype | IgG |
| Molecular Weight | Observed: 14kD |
| Storage Instruction | Store at -20°C for up to 1 year from the date of receipt, and avoid repeat freeze-thaw cycles. |

TARGET INFORMATION

| | |
|-------------|---|
| Gene ID | 3018 255626 |
| Gene Symbol | H2BC3 H2BC1 H2B1B_HUMAN H2B1A_HUMAN H2B1C_HUMAN |
| Specificity | The antibody detects endogenous Histone H2B (Di Methyl Lys5) protein. |

ADDITIONAL INFORMATION

Note STRICTLY FOR FURTHER SCIENTIFIC RESEARCH USE ONLY (RUO). MUST NOT TO BE USED IN DIAGNOSTIC OR THERAPEUTIC APPLICATIONS.



Western blot analysis of 1) HeLa, 2) 3T3, diluted at 1:2000. Secondary antibody (STJ99666) was diluted at 1:20000 cells nucleus extracted by Minute TM Cytoplasmic and Nuclear Fractionation kit (SC-003, Inventibiotech, MN, USA).