

## Anti-Di-Methyl-Histone H3-Lys36 antibody (STJ197294)

### GENERAL INFORMATION

Product Type	Primary antibodies
Applications	WB
Host / Source	Rabbit
Reactivity	Human/Mouse/Rat

### PRODUCT PROPERTIES

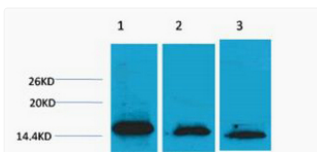
Clonality	Polyclonal
Conjugation	Unconjugated
Purification	The antibody was affinity-purified from rabbit antiserum by affinity-chromatography using epitope-specific immunogen.
Dilution Range	WB 1:500-1000
Formulation	Liquid in PBS pH7.4, 0.5% BSA, 0.02% Sodium Azide and 50% Glycerol.
Isotype	IgG
Molecular Weight	Observed: 15-17kD
Storage Instruction	Store at -20°C for up to 1 year from the date of receipt, and avoid repeat freeze-thaw cycles.

### TARGET INFORMATION

Gene ID	<a href="#">3020/3021</a> <a href="#">8350/8351/8352/8353/8354/8355/8356/8357/8358/8968</a>
Gene Symbol	<a href="#">H3-3A.H3-3B</a> <a href="#">H3C1.H3C2.H</a>
UniProt ID	<a href="#">H33_HUMAN</a> <a href="#">H31_HUMAN</a> <a href="#">H32_HUMAN</a> <
Specificity	The antibody detects endogenous Histone H3 (Di Methyl Lys36) protein.

### ADDITIONAL INFORMATION

Note STRICTLY FOR FURTHER SCIENTIFIC RESEARCH USE ONLY (RUO). MUST NOT TO BE USED IN DIAGNOSTIC OR THERAPEUTIC APPLICATIONS.



Western blot analysis of 1) HeLa, 2) 3T3, 3) Rat Liver Tissue, diluted at 1:1000. Secondary antibody (STJ99666) was diluted at 1:20000 cells nucleus extracted by Minute TM Cytoplasmic and Nuclear Fractionation kit (SC-003, Inventiotech, MN, USA).