

Anti-Human Placental Lactogen antibody (150-217 aa) [ABT540] (STJ197276)

GENERAL INFORMATION

Product Type	Primary antibodies
Applications	IHC
Host / Source	Mouse
Reactivity	Human

PRODUCT PROPERTIES

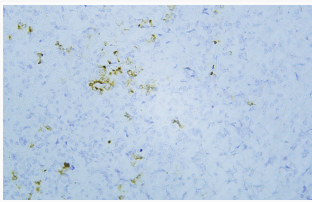
Clonality	Monoclonal
Conjugation	Unconjugated
Purification	The antibody was affinity-purified from mouse ascites by affinity-chromatography using specific immunogen.
Dilution Range	IHC-P 1:200-400
Formulation	Liquid in PBS pH7.2, 0.03% Proclin 300, with stabilizing protein.
Isotype	IgG1k
Storage Instruction	Store at -20°C for up to 1 year from the date of receipt, and avoid repeat freeze-thaw cycles.

TARGET INFORMATION

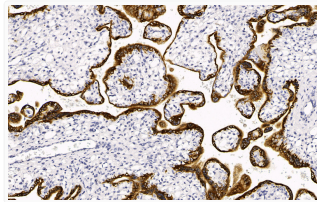
Gene ID	1442 1443 2688 CSH1 CSH2 CSH1_HUMAN CSH2_HUMAN SOMA_HUMAN
Immunogen Region	150-217 aa
Specificity	The antibody can recognize human Placental lactogen and GH protein.

ADDITIONAL INFORMATION

Note **STRICTLY FOR FURTHER SCIENTIFIC RESEARCH USE ONLY (RUO). MUST NOT TO BE USED IN DIAGNOSTIC OR THERAPEUTIC APPLICATIONS.**



Human pituitary adenoma tissue was stained with Anti-GH + hPL (ABT540) Antibody



Human placenta tissue was stained with Anti-GH + hPL (ABT540) Antibody