

Anti-KRT8/KRT18 antibody (CK8 C-term/CK18 200-300) [ABT053/ABT-CK18] (STJ197274)

GENERAL INFORMATION

Product Type	Primary antibodies
Applications	IHC/WB
Host / Source	Mouse
Reactivity	Human/Mouse/Rat

PRODUCT PROPERTIES

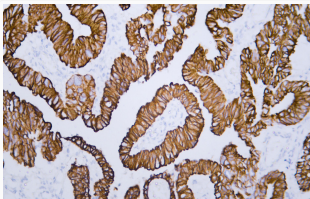
Clonality	Monoclonal
Conjugation	Unconjugated
Purification	The antibody was affinity-purified from mouse ascites by affinity-chromatography using specific immunogen.
Dilution Range	IHC-P 1:200-400 WB 500-1000
Formulation	Liquid in PBS pH7.2, 0.03% Proclin 300, with stabilizing protein.
Isotype	IgG2bk
Molecular Weight	Observed: 48kD, 54kD
Storage Instruction	Store at -20°C for up to 1 year from the date of receipt, and avoid repeat freeze-thaw cycles.

TARGET INFORMATION

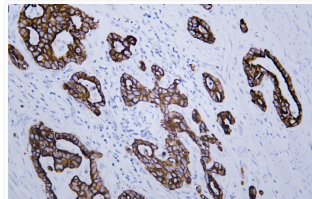
Gene ID	3875 3856
Gene Symbol	KRT18 KRT8
UniProt ID	K1C18_HUMAN K2C8_HUMAN
Immunogen Region	CK8 C-term/CK18 200-300
Specificity	This product can specifically recognize human CK8 and CK18 protein. It is a cocktail of anti-CK8 and anti-CK18 monoclonal antibodies.

ADDITIONAL INFORMATION

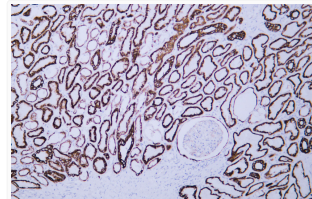
Note STRICTLY FOR FURTHER SCIENTIFIC RESEARCH USE ONLY (RUO). MUST NOT TO BE USED IN DIAGNOSTIC OR THERAPEUTIC APPLICATIONS.



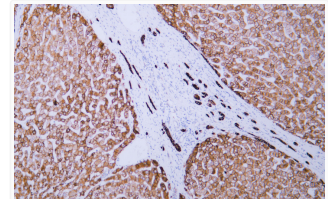
Human colon carcinoma tissue was stained with Anti-Cytokeratin 8/18 (ABT053/ABT-CK18) Antibody



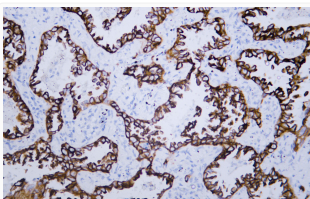
Human gastric adenocarcinoma tissue was stained with Anti-Cytokeratin 8/18 (ABT053/ABT-CK18) Antibody



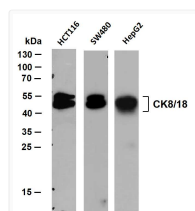
Human kidney tissue was stained with Anti-Cytokeratin 8/18 (ABT053/ABT-CK18) Antibody



Human liver tissue was stained with Anti-Cytokeratin 8/18 (ABT053/ABT-CK18) Antibody



Human lung adenocarcinoma tissue was stained with Anti-Cytokeratin 8/18 (ABT053/ABT-CK18) Antibody



Whole cell lysates were separated by 10% SDS-PAGE, and the membrane was blotted with anti-CK8/18 (ABT053/CK18) antibody. The HRP-conjugated Goat anti- mouse IgG (H + L) antibody was used to detect the antibody. Lane 1: HCT116 Lane 2: SW480 Lane 3: HepG2 Predicted band size: 48, 54kDa Observed band size: 48, 54kDa